

SEMG1 Rabbit pAb

Catalog No.: A5487

1 Publications

Basic Information

Observed MW

60kDa

Calculated MW

52kDa

Category

Primary antibody

Applications

WB, ELISA

Cross-Reactivity

Human, Mouse, Rat

Background

The protein encoded by this gene is the predominant protein in semen. The encoded secreted protein is involved in the formation of a gel matrix that encases ejaculated spermatozoa. This preproprotein is proteolytically processed by the prostate-specific antigen (PSA) protease to generate multiple peptide products that exhibit distinct functions. One of these peptides, Sgl-29, is an antimicrobial peptide with antibacterial activity. This proteolysis process also breaks down the gel matrix and allows the spermatozoa to move more freely. This gene and another similar semenogelin gene are present in a gene cluster on chromosome 20.

Recommended Dilutions

WB 1:500 - 1:2000

ELISA Recommended starting concentration is 1 µg/mL. Please optimize the concentration based on your specific assay requirements.

Immunogen Information

Gene ID

6406

Swiss Prot

P04279

Immunogen

Recombinant protein (or fragment). This information is considered to be commercially sensitive.

Synonyms

SGI; SEMG; CT103; dj172H20.2; SEMG1

Contact

☎ | 400-999-6126

✉ | cn.market@abclonal.com.cn

🌐 | www.abclonal.com.cn

Product Information

Source

Rabbit

Isotype

IgG

Purification

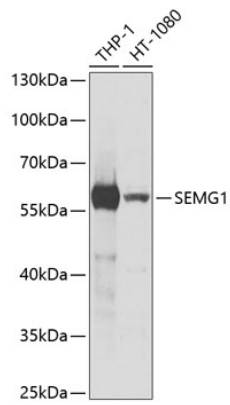
Affinity purification

Storage

Store at -20°C. Avoid freeze / thaw cycles.

Buffer: PBS containing 50% glycerol, preserved with proclin300 or sodium azide (as specified on the Certificate of Analysis), pH 7.3.

Validation Data



Western blot analysis of various lysates using SEMG1 Rabbit pAb (A5487) at 1:1000 dilution.
Secondary antibody: HRP-conjugated Goat anti-Rabbit IgG (H+L) (AS014) at 1:10000 dilution.
Lysates/proteins: 25µg per lane.
Blocking buffer: 3% nonfat dry milk in TBST.
Detection: ECL Basic Kit (RM00020).
Exposure time: 90s.