

SNRPE Rabbit pAb

Catalog No.: A5488

1 Publications

Basic Information

Observed MW

11kDa

Calculated MW

11kDa

Category

Primary antibody

Applications

ELISA, WB, IHC-P

Cross-Reactivity

Human, Mouse, Rat

Background

The protein encoded by this gene is a core component of U small nuclear ribonucleoproteins, which are key components of the pre-mRNA processing spliceosome. The encoded protein plays a role in the 3' end processing of histone transcripts. This protein is one of the targets in the autoimmune disease systemic lupus erythematosus, and mutations in this gene have been associated with hypotrichosis. Several pseudogenes of this gene have been identified.

Recommended Dilutions

WB 1:500 - 1:2000

IHC-P 1:50 - 1:200

Immunogen Information

Gene ID

6635

Swiss Prot

P62304

Immunogen

Recombinant fusion protein containing a sequence corresponding to amino acids 1-92 of human SNRPE (NP_003085.1).

Synonyms

SME; Sm-E; HYPT11; snRNP-E; SNRPE

Contact

☎ | 400-999-6126

✉ | cn.market@abclonal.com.cn

🌐 | www.abclonal.com.cn

Product Information

Source

Rabbit

Isotype

IgG

Purification

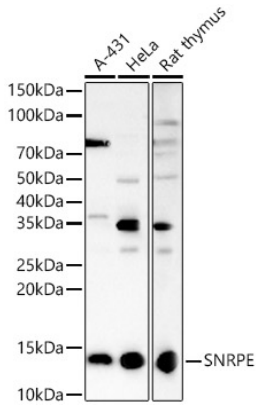
Affinity purification

Storage

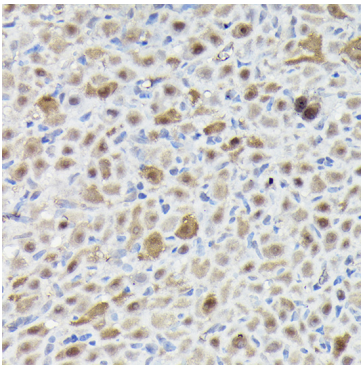
Store at -20°C. Avoid freeze / thaw cycles.

Buffer: PBS with 0.02% sodium azide, 50% glycerol, pH 7.3.

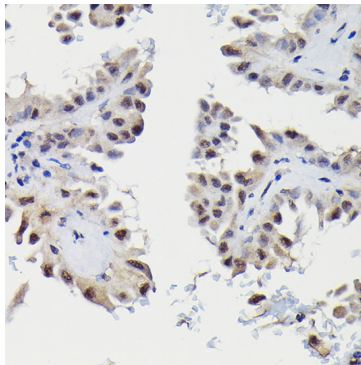
Validation Data



Western blot analysis of various lysates, using SNRPE Rabbit pAb (A5488) at 1:2000 dilution.
Secondary antibody: HRP Goat Anti-Rabbit IgG (H+L) (AS014) at 1:10000 dilution.
Lysates/proteins: 25ug per lane.
Blocking buffer: 3% nonfat dry milk in TBST.
Detection: ECL Basic Kit (RM00020).
Exposure time: 180s.



Immunohistochemistry analysis of paraffin-embedded Rat ovary using SNRPE Rabbit pAb (A5488) at dilution of 1:50 (40x lens). Perform high pressure antigen retrieval with 10 mM citrate buffer pH 6.0 before commencing with IHC staining protocol.



Immunohistochemistry analysis of paraffin-embedded Human thyroid cancer using SNRPE Rabbit pAb (A5488) at dilution of 1:50 (40x lens). Perform high pressure antigen retrieval with 10 mM citrate buffer pH 6.0 before commencing with IHC staining protocol.