

TLE1 Rabbit pAb

Catalog No.: A5501

Basic Information

Observed MW

83kDa

Calculated MW

83kDa

Category

Primary antibody

Applications

WB, ELISA

Cross-Reactivity

Human

Background

Enables identical protein binding activity and transcription corepressor activity. Involved in negative regulation of I-kappaB kinase/NF-kappaB signaling; negative regulation of anoikis; and regulation of gene expression. Located in cytosol and nucleoplasm. Part of beta-catenin-TCF complex.

Recommended Dilutions

WB 1:500 - 1:2000

ELISA Recommended starting concentration is 1 µg/mL. Please optimize the concentration based on your specific assay requirements.

Immunogen Information

Gene ID

7088

Swiss Prot

Q04724

Immunogen

Recombinant protein (or fragment). This information is considered to be commercially sensitive.

Synonyms

ESG; ESG1; GRG1; TLE-1; TLE1

Contact

☎ | 400-999-6126

✉ | cn.market@abclonal.com.cn

🌐 | www.abclonal.com.cn

Product Information

Source

Rabbit

Isotype

IgG

Purification

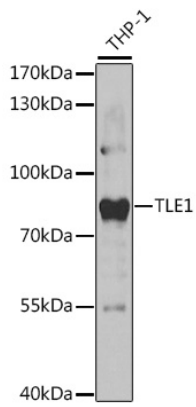
Affinity purification

Storage

Store at -20°C. Avoid freeze / thaw cycles.

Buffer: PBS containing 50% glycerol, preserved with proclin300 or sodium azide (as specified on the Certificate of Analysis), pH 7.3.

Validation Data



Western blot analysis of lysates from THP-1 cells, using TLE1 Rabbit pAb (A5501) at 1:1000 dilution.
Secondary antibody: HRP-conjugated Goat anti-Rabbit IgG (H+L) (AS014) at 1:10000 dilution.
Lysates/proteins: 25µg per lane.
Blocking buffer: 3% nonfat dry milk in TBST.
Detection: ECL Basic Kit (RM00020).
Exposure time: 30s.