

# STAT3 Rabbit pAb

Catalog No.: A5511 **2 Publications**

## Basic Information

### Observed MW

### Calculated MW

88kDa

### Category

Primary antibody

### Applications

ELISA, IHC-P

### Cross-Reactivity

Human, Mouse, Rat

## Background

The protein encoded by this gene is a member of the STAT protein family. In response to cytokines and growth factors, STAT family members are phosphorylated by the receptor associated kinases, and then form homo- or heterodimers that translocate to the cell nucleus where they act as transcription activators. This protein is activated through phosphorylation in response to various cytokines and growth factors including IFNs, EGF, IL5, IL6, HGF, LIF and BMP2. This protein mediates the expression of a variety of genes in response to cell stimuli, and thus plays a key role in many cellular processes such as cell growth and apoptosis. The small GTPase Rac1 has been shown to bind and regulate the activity of this protein. PIAS3 protein is a specific inhibitor of this protein. This gene also plays a role in regulating host response to viral and bacterial infections. Mutations in this gene are associated with infantile-onset multisystem autoimmune disease and hyper-immunoglobulin E syndrome.

## Recommended Dilutions

IHC-P 1:50 - 1:100

## Immunogen Information

### Gene ID

6774

### Swiss Prot

P40763

### Immunogen

Recombinant fusion protein containing a sequence corresponding to amino acids 40-240 of human STAT3 (NP\_644805.1).

### Synonyms

APRF; HIES; ADMIO; ADMIO1; STAT3

## Contact

 | 400-999-6126 | [cn.market@abclonal.com.cn](mailto:cn.market@abclonal.com.cn) | [www.abclonal.com.cn](http://www.abclonal.com.cn)

## Product Information

### Source

Rabbit

### Isotype

IgG

### Purification

Affinity purification

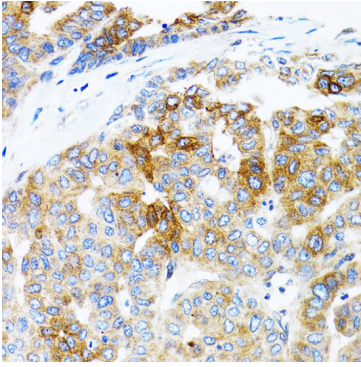
### Storage

Store at -20°C. Avoid freeze / thaw cycles.

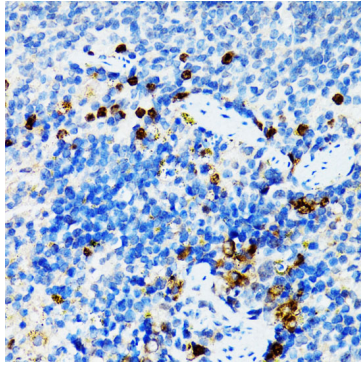
Buffer: PBS with 0.02% sodium azide, 50% glycerol, pH 7.3.

## Validation Data

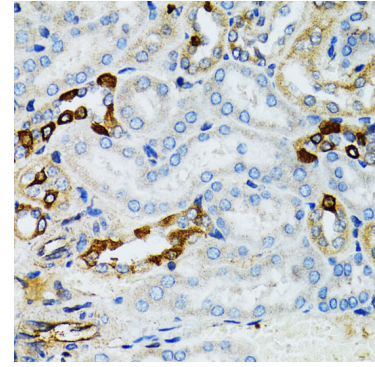
---



Immunohistochemistry analysis of paraffin-embedded Human liver cancer using STAT3 Rabbit pAb (A5511) at dilution of 1:100 (40x lens). Perform microwave antigen retrieval with 10 mM PBS buffer pH 7.2 before commencing with IHC staining protocol.



Immunohistochemistry analysis of paraffin-embedded Mouse spleen using STAT3 Rabbit pAb (A5511) at dilution of 1:100 (40x lens). Perform microwave antigen retrieval with 10 mM PBS buffer pH 7.2 before commencing with IHC staining protocol.



Immunohistochemistry analysis of paraffin-embedded Mouse kidney using STAT3 Rabbit pAb (A5511) at dilution of 1:100 (40x lens). Perform microwave antigen retrieval with 10 mM PBS buffer pH 7.2 before commencing with IHC staining protocol.