

CGRP Rabbit pAb

Catalog No.: A5542SP **18 Publications**

Basic Information

Observed MW

10 kDa

Calculated MW

14 kDa

Category

Primary antibody

Applications

WB,IF/ICC,ELISA

Cross-Reactivity

Human, Mouse, Rat

Background

This gene encodes the peptide hormones calcitonin, calcitonin gene-related peptide and katalcalcin by tissue-specific alternative RNA splicing of the gene transcripts and cleavage of inactive precursor proteins. Calcitonin is involved in calcium regulation and acts to regulate phosphorus metabolism. Calcitonin gene-related peptide functions as a vasodilator and as an antimicrobial peptide while katalcalcin is a calcium-lowering peptide. Multiple transcript variants encoding different isoforms have been found for this gene.

Recommended Dilutions

WB 1:1000 - 1:3000

IF/ICC 1:100 - 1:1000

ELISA Recommended starting concentration is 1 µg/mL. Please optimize the concentration based on your specific assay requirements. For high-ratio antibody dilutions ($\geq 1:10000$) a sequential dilution method is strongly recommended to ensure measurement accuracy.

Immunogen Information

Gene ID

796

Swiss Prot

P06881

Immunogen

This information is considered to be commercially sensitive.

Synonyms

CT; KC; PCT; CGRP; CALC1; CGRP1; CGRP-I; CGRP-alpha

Product Information

Source

Rabbit

Isotype

IgG

Purification

Affinity purification

Storage

Store at -20°C. Avoid freeze / thaw cycles.

Buffer: PBS, pH 7.3, containing 50% glycerol. Preserved with Proclin300 or sodium azide.

May contain 0.05% BSA as specified on the Certificate of Analysis.

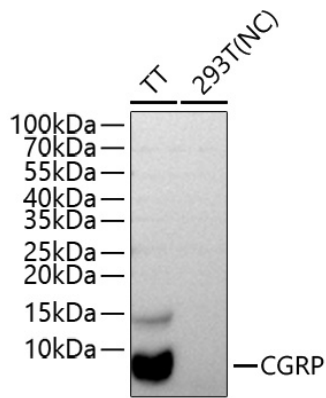
Contact

☎ | 400-999-6126

✉ | cn.market@abclonal.com.cn

🌐 | www.abclonal.com.cn

Validation Data



Western blot analysis of various lysates using CGRP Rabbit pAb (A5542SP) at 1:1000 dilution incubated overnight at 4°C.

Secondary antibody: HRP-conjugated Goat anti-Rabbit IgG (H+L) (AS014) at 1:10000 dilution.

Lysates/proteins: 25 µg per lane.

Blocking buffer: 3% nonfat dry milk in TBST.

Detection: ECL Basic Kit (RM00020).

Negative control (NC): 293T.

Exposure time: 20 s.