

# PRDM14 Rabbit pAb

Catalog No.: A5543

## Basic Information

### Observed MW

70kDa

### Calculated MW

64kDa

### Category

Primary antibody

### Applications

ELISA, WB, IHC-P, ChIP

### Cross-Reactivity

Human, Mouse, Rat

## Background

This gene encodes a member of the PRDI-BF1 and RIZ homology domain containing (PRDM) family of transcriptional regulators. The encoded protein may possess histone methyltransferase activity and plays a critical role in cell pluripotency by suppressing the expression of differentiation marker genes. Expression of this gene may play a role in breast cancer.

## Recommended Dilutions

**WB** 1:500 - 1:1000

**IHC-P** 1:50 - 1:200

**ChIP** 5µg antibody for  
10µg-15µg of Chromatin

## Immunogen Information

### Gene ID

63978

### Swiss Prot

Q9GZV8

### Immunogen

Recombinant fusion protein containing a sequence corresponding to amino acids 1-260 of human PRDM14 (NP\_078780.1).

### Synonyms

PFM11; PRDM14

## Contact

 | 400-999-6126

 | [cn.market@abclonal.com.cn](mailto:cn.market@abclonal.com.cn)

 | [www.abclonal.com.cn](http://www.abclonal.com.cn)

## Product Information

### Source

Rabbit

### Isotype

IgG

### Purification

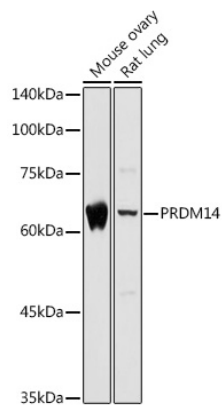
Affinity purification

### Storage

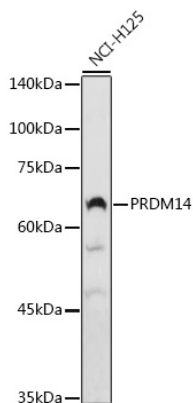
Store at -20°C. Avoid freeze / thaw cycles.

Buffer: PBS with 0.01% thimerosal, 50% glycerol, pH7.3.

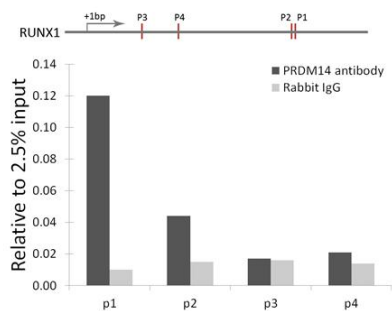
Validation Data



Western blot analysis of various lysates using PRDM14 Rabbit pAb (A5543) at 1:1000 dilution.  
Secondary antibody: HRP Goat Anti-Rabbit IgG (H+L) (AS014) at 1:10000 dilution.  
Lysates/proteins: 25µg per lane.  
Blocking buffer: 3% nonfat dry milk in TBST.  
Detection: ECL Basic Kit (RM00020).  
Exposure time: 5s.



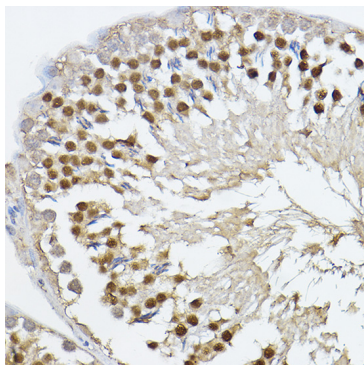
Western blot analysis of lysates from NCI-H125 cells, using PRDM14 Rabbit pAb (A5543) at 1:1000 dilution.  
Secondary antibody: HRP Goat Anti-Rabbit IgG (H+L) (AS014) at 1:10000 dilution.  
Lysates/proteins: 25µg per lane.  
Blocking buffer: 3% nonfat dry milk in TBST.  
Detection: ECL Basic Kit (RM00020).  
Exposure time: 90s.



Chromatin immunoprecipitation analysis of RUNX1 gene from 293 cell line, using PRDM14 antibody (A5543) and rabbit IgG. P1, P2, P3 and P4 were four probes located on RUNX1 gene as the schematic diagram illustrated. The amount of immunoprecipitated DNA was checked by quantitative PCR. Histogram was constructed by the ratios of the immunoprecipitated DNA to the input.

## Validation Data

---



Immunohistochemistry analysis of PRDM14 in paraffin-embedded rat testis using PRDM14 Rabbit pAb (A5543) at dilution of 1:100 (40x lens). Perform high pressure antigen retrieval with 10 mM citrate buffer pH 6.0 before commencing with IHC staining protocol.