

# FZR1 Rabbit pAb

Catalog No.: A5550

## Basic Information

### Observed MW

55kDa

### Calculated MW

55kDa

### Category

Primary antibody

### Applications

ELISA, WB, IF/ICC

### Cross-Reactivity

Human, Mouse, Rat

## Background

Predicted to enable anaphase-promoting complex binding activity and ubiquitin ligase activator activity. Involved in anaphase-promoting complex-dependent catabolic process; mitotic G2 DNA damage checkpoint signaling; and positive regulation of protein metabolic process. Located in nuclear membrane and nucleoplasm. Colocalizes with anaphase-promoting complex.

## Recommended Dilutions

WB 1:100 - 1:500

IF/ICC 1:50 - 1:200

## Immunogen Information

### Gene ID

51343

### Swiss Prot

Q9UM11

### Immunogen

Recombinant fusion protein containing a sequence corresponding to amino acids 224-493 of human FZR1 (NP\_057347.2).

### Synonyms

FZR; CDH1; FZR2; HCDH; HCDH1; CDC20C; DEE109; FZR1

## Contact

☎ | 400-999-6126

✉ | [cn.market@abclonal.com.cn](mailto:cn.market@abclonal.com.cn)

🌐 | [www.abclonal.com.cn](http://www.abclonal.com.cn)

## Product Information

### Source

Rabbit

### Isotype

IgG

### Purification

Affinity purification

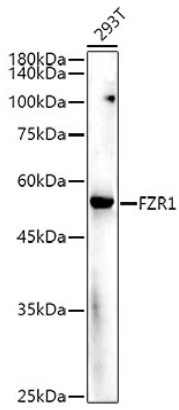
### Storage

Store at -20°C. Avoid freeze / thaw cycles.

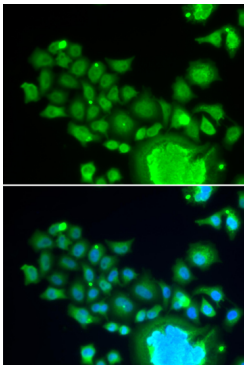
Buffer: PBS with 0.05% proclin300, 50% glycerol, pH7.3.

## Validation Data

---



Western blot analysis of extracts of 293T cells, using FZR1 antibody (A5550) at 1:500 dilution.  
Secondary antibody: HRP Goat Anti-Rabbit IgG (H+L) (AS014) at 1:10000 dilution.  
Lysates/proteins: 25µg per lane.  
Blocking buffer: 3% nonfat dry milk in TBST.  
Detection: ECL Enhanced Kit (RM00021).  
Exposure time: 180s.



Immunofluorescence analysis of HeLa cells using FZR1 antibody (A5550). Blue: DAPI for nuclear staining.