

MCM5 Rabbit pAb

Catalog No.: A5556

1 Publications

Basic Information

Observed MW

100kDa

Calculated MW

82kDa

Category

Primary antibody

Applications

ELISA,WB,IF/ICC,IP

Cross-Reactivity

Human, Mouse, Rat

Background

The protein encoded by this gene is structurally very similar to the CDC46 protein from *S. cerevisiae*, a protein involved in the initiation of DNA replication. The encoded protein is a member of the MCM family of chromatin-binding proteins and can interact with at least two other members of this family. The encoded protein is upregulated in the transition from the G0 to G1/S phase of the cell cycle and may actively participate in cell cycle regulation.

Recommended Dilutions

WB 1:1000 - 1:3000

IF/ICC 1:50 - 1:200

IP 0.5µg-4µg antibody for
200µg-400µg extracts of
whole cells

Immunogen Information

Gene ID

4174

Swiss Prot

P33992

Immunogen

Recombinant fusion protein containing a sequence corresponding to amino acids 1-230 of human MCM5 (NP_006730.2).

Synonyms

CDC46; MGORS8; P1-CDC46; MCM5

Contact

☎ | 400-999-6126

✉ | cn.market@abclonal.com.cn

🌐 | www.abclonal.com.cn

Product Information

Source

Rabbit

Isotype

IgG

Purification

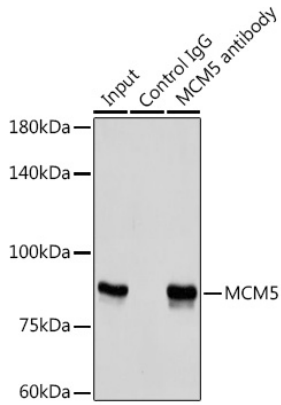
Affinity purification

Storage

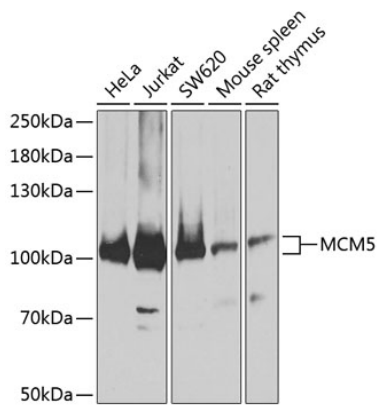
Store at -20°C. Avoid freeze / thaw cycles.

Buffer: PBS with 0.02% sodium azide,50% glycerol,pH7.3.

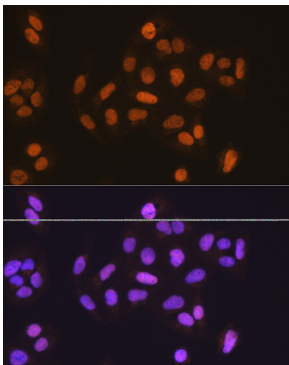
Validation Data



Immunoprecipitation analysis of 300 µg extracts of HeLa cells using 3 µg MCM5 antibody (A5556). Western blot was performed from the immunoprecipitate using MCM5 antibody (A5556) at a dilution of 1:1000.



Western blot analysis of various lysates using MCM5 Rabbit pAb (A5556) at 1:3000 dilution. Secondary antibody: HRP Goat Anti-Rabbit IgG (H+L) (AS014) at 1:10000 dilution. Lysates/proteins: 25µg per lane. Blocking buffer: 3% nonfat dry milk in TBST. Detection: ECL Basic Kit (RM00020). Exposure time: 30s.



Immunofluorescence analysis of U-2 OS cells using MCM5 Rabbit pAb (A5556) at dilution of 1:100 (40x lens). Secondary antibody: Cy3 Goat Anti-Rabbit IgG (H+L) (AS007) at 1:500 dilution. Blue: DAPI for nuclear staining.