

CDC5L Rabbit pAb

Catalog No.: A5560 **2 Publications**

Basic Information

Observed MW

107kDa

Calculated MW

92kDa

Category

Primary antibody

Applications

ELISA, WB

Cross-Reactivity

Human, Mouse

Background

The protein encoded by this gene shares a significant similarity with Schizosaccharomyces pombe cdc5 gene product, which is a cell cycle regulator important for G2/M transition. This protein has been demonstrated to act as a positive regulator of cell cycle G2/M progression. It was also found to be an essential component of a non-snRNA spliceosome, which contains at least five additional protein factors and is required for the second catalytic step of pre-mRNA splicing.

Recommended Dilutions

WB 1:500 - 1:2000

Immunogen Information

Gene ID

988

Swiss Prot

Q99459

Immunogen

Recombinant fusion protein containing a sequence corresponding to amino acids 563-802 of human CDC5L (NP_001244.1).

Synonyms

CDC5; CEF1; PCDC5RP; CDC5-LIKE; dj319D22.1; CDC5L

Contact

 | 400-999-6126

 | cn.market@abclonal.com.cn

 | www.abclonal.com.cn

Product Information

Source

Rabbit

Isotype

IgG

Purification

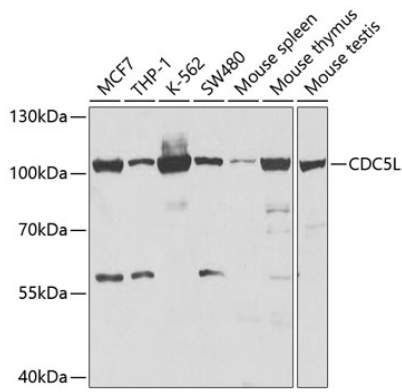
Affinity purification

Storage

Store at -20°C. Avoid freeze / thaw cycles.

Buffer: PBS with 0.02% sodium azide, 50% glycerol, pH 7.3.

Validation Data



Western blot analysis of extracts of various cell lines, using CDC5L antibody (A5560) at 1:1000 dilution.
Secondary antibody: HRP Goat Anti-Rabbit IgG (H+L) (AS014) at 1:10000 dilution.
Lysates/proteins: 25µg per lane.
Blocking buffer: 3% nonfat dry milk in TBST.