

RING1B/RNF2 Rabbit pAb

Catalog No.: A5563 **2 Publications**

Basic Information

Observed MW

41kDa

Calculated MW

38kDa

Category

Primary antibody

Applications

WB, IHC-P, IF/ICC, IP, ELISA, ChIP

Cross-Reactivity

Human, Mouse, Rat

Background

Polycomb group (PcG) of proteins form the multiprotein complexes that are important for the transcription repression of various genes involved in development and cell proliferation. The protein encoded by this gene is one of the PcG proteins. It has been shown to interact with, and suppress the activity of, transcription factor CP2 (TFCP2/CP2). Studies of the mouse counterpart suggested the involvement of this gene in the specification of anterior-posterior axis, as well as in cell proliferation in early development. This protein was also found to interact with huntingtin interacting protein 2 (HIP2), an ubiquitin-conjugating enzyme, and possess ubiquitin ligase activity.

Recommended Dilutions

WB	1:500 - 1:1000
IHC-P	1:50 - 1:200
IF/ICC	1:50 - 1:200
IP	0.5µg-4µg antibody for 200µg-400µg extracts of whole cells
ELISA	Recommended starting concentration is 1 µg/mL. Please optimize the concentration based on your specific assay requirements.
ChIP	5µg antibody for 10µg-15µg of Chromatin

Immunogen Information

Gene ID	Swiss Prot
6045	Q99496

Immunogen

Recombinant fusion protein containing a sequence corresponding to amino acids 1-336 of human RING1B/RING1B/RNF2 (NP_009143.1).

Synonyms

BAP1; DING; BAP-1; HIP13; RING2; LUSYAM; RING1B; RING1B/RNF2

Product Information

Source	Isotype	Purification
Rabbit	IgG	Affinity purification

Storage

Store at -20°C. Avoid freeze / thaw cycles.

Buffer: PBS with 0.05% proclin300, 50% glycerol, pH7.3.

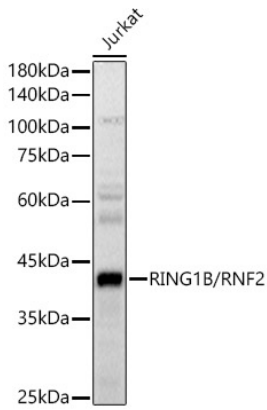
Contact

 | 400-999-6126

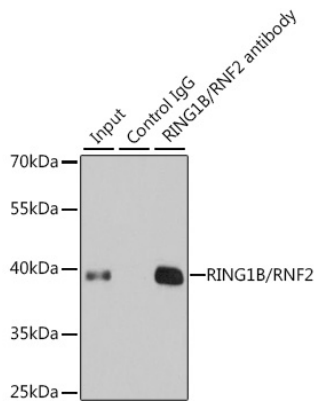
 | cn.market@abclonal.com.cn

 | www.abclonal.com.cn

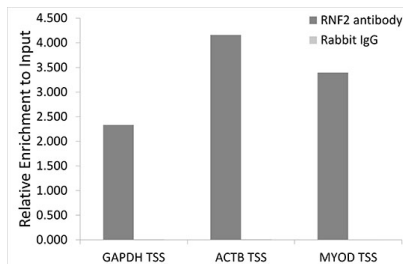
Validation Data



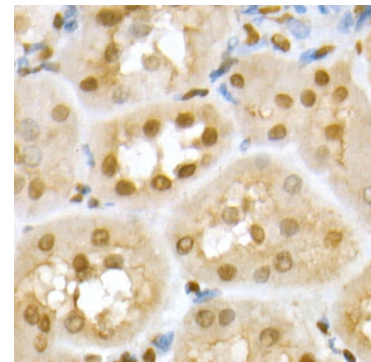
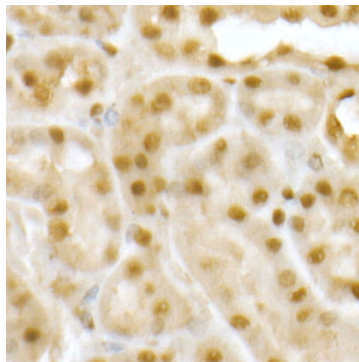
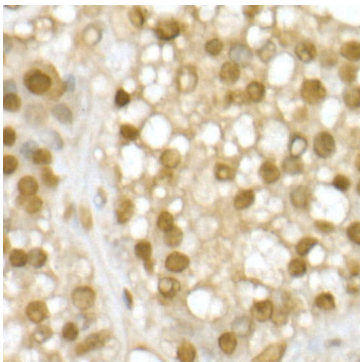
Western blot analysis of lysates from Jurkat cells, using RING1B/RNF2 Rabbit pAb (A5563) at 1:400 dilution.
Secondary antibody: HRP-conjugated Goat anti-Rabbit IgG (H+L) (AS014) at 1:10000 dilution.
Lysates/proteins: 25µg per lane.
Blocking buffer: 3% nonfat dry milk in TBST.
Detection: ECL Basic Kit (RM00020).
Exposure time: 1s.



Immunoprecipitation analysis of 200 µg extracts of 293T cells using 1 µg RING1B/RNF2 antibody (A5563). Western blot was performed from the immunoprecipitate using RING1B/RNF2 antibody (A5563) at a dilution of 1:1000.



Chromatin immunoprecipitation analysis of extracts of HeLa cells, using RING1B/RNF2 antibody (A5563) and rabbit IgG. The amount of immunoprecipitated DNA was checked by quantitative PCR. Histogram was constructed by the ratios of the immunoprecipitated DNA to the input.



Validation Data

Immunohistochemistry analysis of paraffin-embedded Human liver cancer using RING1B/RNF2 Rabbit pAb (A5563) at dilution of 1:50 (40x lens). High pressure antigen retrieval performed with 0.01M Citrate Bufferr (pH 6.0) prior to IHC staining.

Immunohistochemistry analysis of paraffin-embedded Mouse kidney using RING1B/RNF2 Rabbit pAb (A5563) at dilution of 1:50 (40x lens). High pressure antigen retrieval performed with 0.01M Citrate Bufferr (pH 6.0) prior to IHC staining.

Immunohistochemistry analysis of paraffin-embedded Rat kidney using RING1B/RNF2 Rabbit pAb (A5563) at dilution of 1:50 (40x lens). High pressure antigen retrieval performed with 0.01M Citrate Bufferr (pH 6.0) prior to IHC staining.