

ATG9A Rabbit pAb

Catalog No.: A5571 **2 Publications**

Basic Information

Observed MW

100kDa

Calculated MW

94kDa

Category

Primary antibody

Applications

ELISA, WB, IF/ICC

Cross-Reactivity

Human

Background

Acts upstream of or within autophagosome assembly. Located in endosome; phagophore assembly site; and trans-Golgi network.

Recommended Dilutions

WB	1:500 - 1:1000
IF/ICC	1:50 - 1:200

Immunogen Information

Gene ID

79065

Swiss Prot

Q7Z3C6

Immunogen

A synthetic peptide corresponding to a sequence within amino acids 700-800 of human ATG9A (NP_076990.4).

Synonyms

mATG9; APG9L1; MGD3208; ATG9A

Contact

 | 400-999-6126

 | cn.market@abclonal.com.cn

 | www.abclonal.com.cn

Product Information

Source

Rabbit

Isotype

IgG

Purification

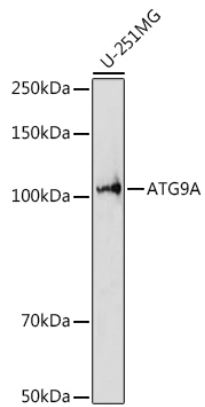
Affinity purification

Storage

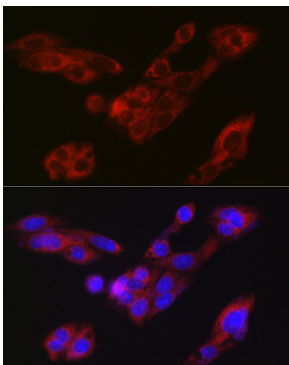
Store at -20°C. Avoid freeze / thaw cycles.

Buffer: PBS with 0.05% proclin300, 50% glycerol, pH7.3.

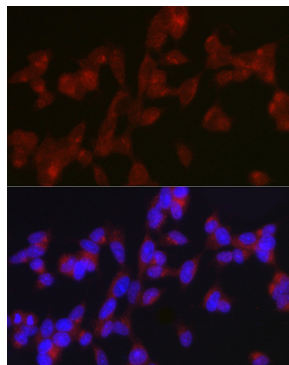
Validation Data



Western blot analysis of extracts of U-251MG cells, using ATG9A antibody (A5571) at 1:1000 dilution.
Secondary antibody: HRP Goat Anti-Rabbit IgG (H+L) (AS014) at 1:10000 dilution.
Lysates/proteins: 25µg per lane.
Blocking buffer: 3% nonfat dry milk in TBST.
Detection: ECL Basic Kit (RM00020).
Exposure time: 30s.



Immunofluorescence analysis of HepG2 cells using ATG9A Rabbit pAb (A5571) at dilution of 1:100 (40x lens). Blue: DAPI for nuclear staining.



Immunofluorescence analysis of SH-SY5Y cells using ATG9A Rabbit pAb (A5571) at dilution of 1:100 (40x lens). Blue: DAPI for nuclear staining.