

[KO Validated] NSD3/WHSC1L1 Rabbit pAb

Catalog No.: A5577 **KO Validated**

Basic Information

Observed MW

180kDa

Calculated MW

162kDa

Category

Primary antibody

Applications

ELISA, WB

Cross-Reactivity

Human, Mouse, Rat

Background

This gene is related to the Wolf-Hirschhorn syndrome candidate-1 gene and encodes a protein with PWWP (proline-tryptophan-tryptophan-proline) domains. This protein methylates histone H3 at lysine residues 4 and 27, which represses gene transcription. Two alternatively spliced variants have been described.

Recommended Dilutions

WB 1:500 - 1:1000

Immunogen Information

Gene ID

54904

Swiss Prot

Q9BZ95

Immunogen

Recombinant fusion protein containing a sequence corresponding to amino acids 400-600 of human NSD3/NSD3/WHSC1L1 (NP_060248.2).

Synonyms

KMT3F; KMT3G; WHISTLE; WHSC1L1; pp14328; L1

Contact

 | 400-999-6126

 | cn.market@abclonal.com.cn

 | www.abclonal.com.cn

Product Information

Source

Rabbit

Isotype

IgG

Purification

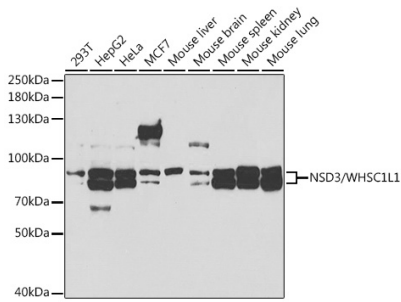
Affinity purification

Storage

Store at -20°C. Avoid freeze / thaw cycles.

Buffer: PBS with 0.01% thimerosal, 50% glycerol, pH7.3.

Validation Data



Western blot analysis of extracts of various cell lines, using NSD3/NSD3/WHSC1L1 antibody (A5577) at 1:1000 dilution.

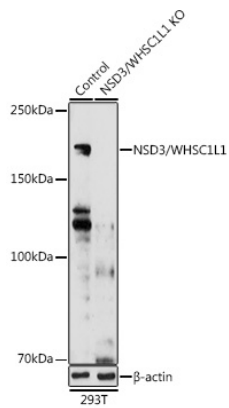
Secondary antibody: HRP Goat Anti-Rabbit IgG (H+L) (AS014) at 1:10000 dilution.

Lysates/proteins: 25µg per lane.

Blocking buffer: 3% nonfat dry milk in TBST.

Detection: ECL Basic Kit (RM00020).

Exposure time: 90s.



Western blot analysis of extracts from normal (control) and NSD3/WHSC1L1 knockout (KO) 293T cells, using NSD3/WHSC1L1 antibody (A5577) at 1:1000 dilution.

Secondary antibody: HRP Goat Anti-Rabbit IgG (H+L) (AS014) at 1:10000 dilution.

Lysates/proteins: 25µg per lane.

Blocking buffer: 3% nonfat dry milk in TBST.

Detection: ECL Basic Kit (RM00020).

Exposure time: 30s.