

# HE4/WFDC2 Rabbit pAb

Catalog No.: A5582 **2 Publications**

## Basic Information

### Observed MW

22kDa

### Calculated MW

13kDa

### Category

Primary antibody

### Applications

ELISA, WB

### Cross-Reactivity

Human

## Background

This gene encodes a protein that is a member of the WFDC domain family. The WFDC domain, or WAP Signature motif, contains eight cysteines forming four disulfide bonds at the core of the protein, and functions as a protease inhibitor in many family members. This gene is expressed in pulmonary epithelial cells, and was also found to be expressed in some ovarian cancers. The encoded protein is a small secretory protein, which may be involved in sperm maturation.

## Recommended Dilutions

WB 1:500 - 1:2000

## Immunogen Information

### Gene ID

10406

### Swiss Prot

Q14508

### Immunogen

Recombinant protein of human HE4/HE4/WFDC2

### Synonyms

HE4; WAP5; EDDM4; dj461P17.6; HE4/WFDC2

## Contact

☎ | 400-999-6126

✉ | [cn.market@abclonal.com.cn](mailto:cn.market@abclonal.com.cn)

🌐 | [www.abclonal.com.cn](http://www.abclonal.com.cn)

## Product Information

### Source

Rabbit

### Isotype

IgG

### Purification

Affinity purification

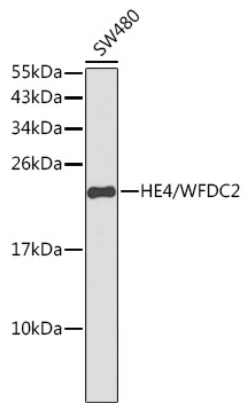
### Storage

Store at -20°C. Avoid freeze / thaw cycles.

Buffer: PBS with 0.02% sodium azide, 50% glycerol, pH7.3.

## Validation Data

---



Western blot analysis of extracts of SW480 cells, using HE4/HE4/WFDC2 antibody (A5582).  
Secondary antibody: HRP Goat Anti-Rabbit IgG (H+L) (AS014) at 1:10000 dilution.  
Lysates/proteins: 25µg per lane.  
Blocking buffer: 3% nonfat dry milk in TBST.