

Hemopexin (HPX) Rabbit pAb

Catalog No.: A5603 **1 Publications**

Basic Information

Observed MW

68kDa

Calculated MW

52kDa

Category

Primary antibody

Applications

ELISA, WB

Cross-Reactivity

Human, Mouse, Rat

Background

This gene encodes a plasma glycoprotein that binds heme with high affinity. The encoded protein is an acute phase protein that transports heme from the plasma to the liver and may be involved in protecting cells from oxidative stress.

Recommended Dilutions

WB 1:500 - 1:2000

Immunogen Information

Gene ID

3263

Swiss Prot

P02790

Immunogen

Recombinant fusion protein containing a sequence corresponding to amino acids 24-245 of human Hemopexin (Hemopexin (HPX)) (NP_000604.1).

Synonyms

HX; Hemopexin (HPX)

Contact

 | 400-999-6126

 | cn.market@abclonal.com.cn

 | www.abclonal.com.cn

Product Information

Source

Rabbit

Isotype

IgG

Purification

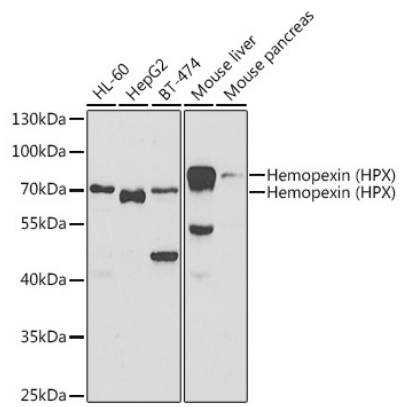
Affinity purification

Storage

Store at -20°C. Avoid freeze / thaw cycles.

Buffer: PBS with 0.02% sodium azide, 50% glycerol, pH7.3.

Validation Data



Western blot analysis of extracts of various cell lines, using Hemopexin (Hemopexin (HPX)) antibody (A5603) at 1:1000 dilution.

Secondary antibody: HRP Goat Anti-Rabbit IgG (H+L) (AS014) at 1:10000 dilution.

Lysates/proteins: 25µg per lane.

Blocking buffer: 3% nonfat dry milk in TBST.

Detection: ECL Basic Kit (RM00020).

Exposure time: 90s.