

APOC1 Rabbit pAb

Catalog No.: A5629

1 Publications

Basic Information

Observed MW

Calculated MW

9kDa

Category

Primary antibody

Applications

ELISA, IHC-P

Cross-Reactivity

Human, Rat

Background

This gene encodes a member of the apolipoprotein C1 family. This gene is expressed primarily in the liver, and it is activated when monocytes differentiate into macrophages. The encoded protein plays a central role in high density lipoprotein (HDL) and very low density lipoprotein (VLDL) metabolism. This protein has also been shown to inhibit cholesteryl ester transfer protein in plasma. A pseudogene of this gene is located 4 kb downstream in the same orientation, on the same chromosome. This gene is mapped to chromosome 19, where it resides within a apolipoprotein gene cluster. Alternative splicing and the use of alternative promoters results in multiple transcript variants.

Recommended Dilutions

IHC-P 1:50 - 1:100

Immunogen Information

Gene ID

341

Swiss Prot

P02654

Immunogen

Recombinant fusion protein containing a sequence corresponding to amino acids 1-83 of human APOC1 (NP_001636.1).

Synonyms

Apo-CI; ApoC-I; apo-CIB; apoC-IB; APOC1

Contact

☎ | 400-999-6126

✉ | cn.market@abclonal.com.cn

🌐 | www.abclonal.com.cn

Product Information

Source

Rabbit

Isotype

IgG

Purification

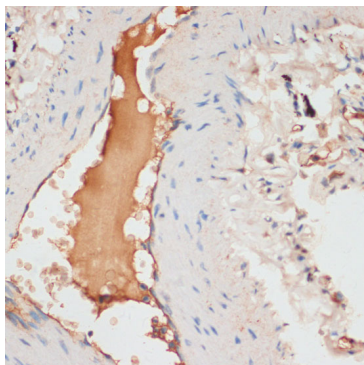
Affinity purification

Storage

Store at -20°C. Avoid freeze / thaw cycles.

Buffer: PBS with 0.02% sodium azide, 50% glycerol, pH 7.3.

Validation Data



Immunohistochemistry analysis of paraffin-embedded Human lung using APOC1 Rabbit pAb (A5629) at dilution of 1:100 (40x lens). Perform microwave antigen retrieval with 10 mM PBS buffer pH 7.2 before commencing with IHC staining protocol.