

# CCL5/RANTES Rabbit pAb

Catalog No.: A5630 **6 Publications**

## Basic Information

**Observed MW**

13kDa

**Calculated MW**

10kDa

**Category**

Primary antibody

**Applications**

ELISA,WB

**Cross-Reactivity**

Human

## Background

This gene is one of several chemokine genes clustered on the q-arm of chromosome 17. Chemokines form a superfamily of secreted proteins involved in immunoregulatory and inflammatory processes. The superfamily is divided into four subfamilies based on the arrangement of the N-terminal cysteine residues of the mature peptide. This chemokine, a member of the CC subfamily, functions as a chemoattractant for blood monocytes, memory T helper cells and eosinophils. It causes the release of histamine from basophils and activates eosinophils. This cytokine is one of the major HIV-suppressive factors produced by CD8+ cells. It functions as one of the natural ligands for the chemokine receptor chemokine (C-C motif) receptor 5 (CCR5), and it suppresses in vitro replication of the R5 strains of HIV-1, which use CCR5 as a coreceptor. Alternative splicing results in multiple transcript variants that encode different isoforms.

## Recommended Dilutions

WB 1:500 - 1:2000

## Immunogen Information

**Gene ID**

6352

**Swiss Prot**

P13501

**Immunogen**

Recombinant fusion protein containing a sequence corresponding to amino acids 1-91 of human CCL5/RANTES (NP\_002976.2).

**Synonyms**

SISd; eoCP; SCYA5; RANTES; TCP228; D17S136E; SIS-delta; CCL5/RANTES

## Contact

 | 400-999-6126 | [cn.market@abclonal.com.cn](mailto:cn.market@abclonal.com.cn) | [www.abclonal.com.cn](http://www.abclonal.com.cn)

## Product Information

**Source**

Rabbit

**Isotype**

IgG

**Purification**

Affinity purification

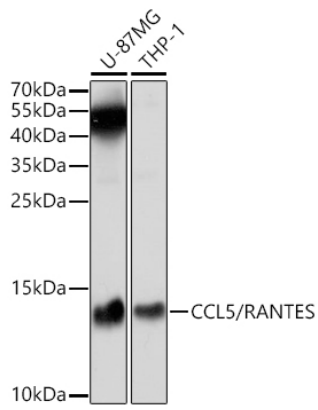
**Storage**

Store at -20°C. Avoid freeze / thaw cycles.

Buffer: PBS with 0.05% proclin300,50% glycerol,pH7.3.

## Validation Data

---



Western blot analysis of various lysates using CCL5/RANTES Rabbit pAb (A5630) at 1:1000 dilution.  
Secondary antibody: HRP Goat Anti-Rabbit IgG (H+L) (AS014) at 1:10000 dilution.  
Lysates/proteins: 25µg per lane.  
Blocking buffer: 3% nonfat dry milk in TBST.  
Detection: ECL Basic Kit (RM00020).  
Exposure time: 5s.