

# [KO Validated] $\alpha$ -Catenin Rabbit pAb

Catalog No.: A5635 **KO Validated** **3 Publications**

## Basic Information

### Observed MW

115kDa

### Calculated MW

100kDa

### Category

Primary antibody

### Applications

ELISA, WB, IHC-P, IP

### Cross-Reactivity

Human, Mouse, Rat

## Background

This gene encodes a member of the catenin family of proteins that play an important role in cell adhesion process by connecting cadherins located on the plasma membrane to the actin filaments inside the cell. The encoded mechanosensing protein contains three vinculin homology domains and undergoes conformational changes in response to cytoskeletal tension, resulting in the reconfiguration of cadherin-actin filament connections. Certain mutations in this gene cause butterfly-shaped pigment dystrophy.

## Recommended Dilutions

**WB** 1:500 - 1:2000

**IHC-P** 1:50 - 1:200

**IP** 0.5 $\mu$ g-4 $\mu$ g antibody for  
200 $\mu$ g-400 $\mu$ g extracts of  
whole cells

## Immunogen Information

### Gene ID

1495

### Swiss Prot

P35221

### Immunogen

Recombinant fusion protein containing a sequence corresponding to amino acids 637-906 of human  $\alpha$ -Catenin (NP\_001894.2).

### Synonyms

MDBS2; MDPT2; CAP102; in

## Contact

☎ | 400-999-6126

✉ | [cn.market@abclonal.com.cn](mailto:cn.market@abclonal.com.cn)

🌐 | [www.abclonal.com.cn](http://www.abclonal.com.cn)

## Product Information

### Source

Rabbit

### Isotype

IgG

### Purification

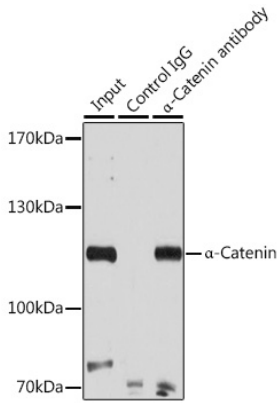
Affinity purification

### Storage

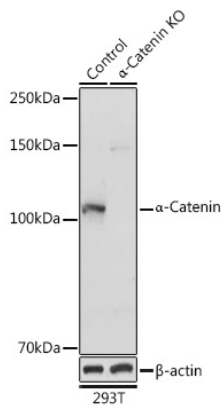
Store at -20°C. Avoid freeze / thaw cycles.

Buffer: PBS with 0.02% sodium azide, 50% glycerol, pH7.3.

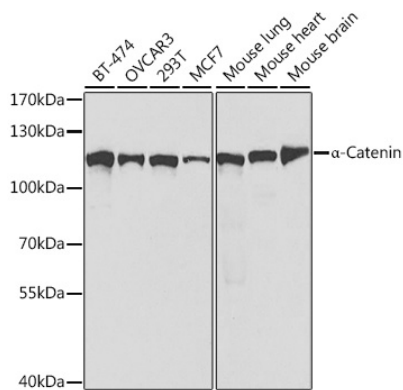
## Validation Data



Immunoprecipitation analysis of 200  $\mu$ g extracts of 293T cells using 3  $\mu$ g  $\alpha$ -Catenin antibody (A5635). Western blot was performed from the immunoprecipitate using  $\alpha$ -Catenin antibody (A5635) at a dilution of 1:500.



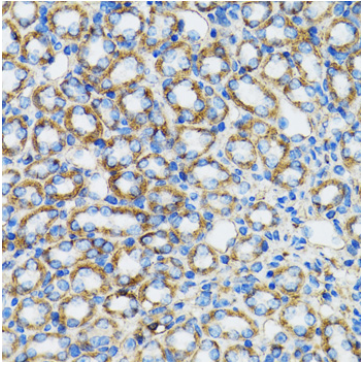
Western blot analysis of lysates from wild type (WT) and  $\alpha$ -Catenin knockout (KO) 293T cells, using [KO Validated]  $\alpha$ -Catenin Rabbit pAb (A5635) at 1:1000 dilution. Secondary antibody: HRP Goat Anti-Rabbit IgG (H+L) (AS014) at 1:10000 dilution. Lysates/proteins: 25 $\mu$ g per lane. Blocking buffer: 3% nonfat dry milk in TBST. Detection: ECL Basic Kit (RM00020). Exposure time: 10s.



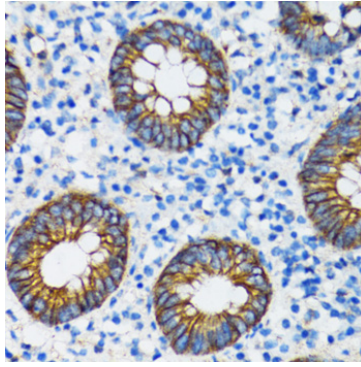
Western blot analysis of various lysates using [KO Validated]  $\alpha$ -Catenin Rabbit pAb (A5635) at 1:1000 dilution. Secondary antibody: HRP Goat Anti-Rabbit IgG (H+L) (AS014) at 1:10000 dilution. Lysates/proteins: 25 $\mu$ g per lane. Blocking buffer: 3% nonfat dry milk in TBST. Detection: ECL Basic Kit (RM00020). Exposure time: 60s.

## Validation Data

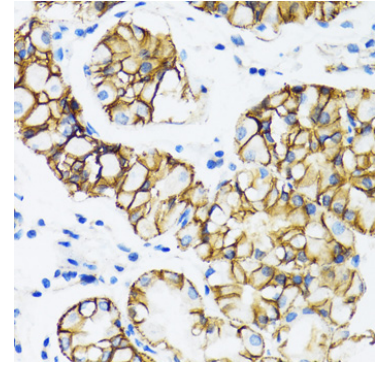
---



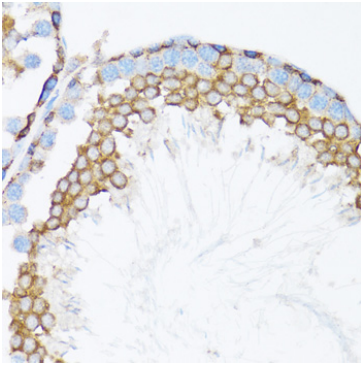
Immunohistochemistry analysis of paraffin-embedded Rat kidney using [KO Validated]  $\alpha$ -Catenin Rabbit pAb (A5635) at dilution of 1:100 (40x lens). Perform microwave antigen retrieval with 10 mM PBS buffer pH 7.2 before commencing with IHC staining protocol.



Immunohistochemistry analysis of paraffin-embedded Human vermiform appendix using [KO Validated]  $\alpha$ -Catenin Rabbit pAb (A5635) at dilution of 1:100 (40x lens). Perform microwave antigen retrieval with 10 mM PBS buffer pH 7.2 before commencing with IHC staining protocol.



Immunohistochemistry analysis of paraffin-embedded Human stomach using [KO Validated]  $\alpha$ -Catenin Rabbit pAb (A5635) at dilution of 1:100 (40x lens). Perform microwave antigen retrieval with 10 mM PBS buffer pH 7.2 before commencing with IHC staining protocol.



Immunohistochemistry analysis of paraffin-embedded Mouse testis using [KO Validated]  $\alpha$ -Catenin Rabbit pAb (A5635) at dilution of 1:100 (40x lens). Perform microwave antigen retrieval with 10 mM PBS buffer pH 7.2 before commencing with IHC staining protocol.