

XPD/ERCC2 Rabbit pAb

Catalog No.: A5640

Basic Information

Observed MW

87kDa

Calculated MW

87kDa

Category

Primary antibody

Applications

ELISA, WB, IF/ICC

Cross-Reactivity

Human, Rat

Background

The nucleotide excision repair pathway is a mechanism to repair damage to DNA. The protein encoded by this gene is involved in transcription-coupled nucleotide excision repair and is an integral member of the basal transcription factor BTF2/TFIIH complex. The gene product has ATP-dependent DNA helicase activity and belongs to the RAD3/XPD subfamily of helicases. Defects in this gene can result in three different disorders, the cancer-prone syndrome xeroderma pigmentosum complementation group D, trichothiodystrophy, and Cockayne syndrome. Alternatively spliced transcript variants encoding different isoforms have been found for this gene.

Recommended Dilutions

WB 1:500 - 1:2000

IF/ICC 1:50 - 1:100

Immunogen Information

Gene ID

2068

Swiss Prot

P18074

Immunogen

Recombinant fusion protein containing a sequence corresponding to amino acids 1-300 of human XPD/XPD/ERCC2 (NP_001124339.1).

Synonyms

EM9; TTD; XPD; TTD1; COFS2; TFIIH; XPD/ERCC2

Contact

☎ | 400-999-6126

✉ | cn.market@abclonal.com.cn

🌐 | www.abclonal.com.cn

Product Information

Source

Rabbit

Isotype

IgG

Purification

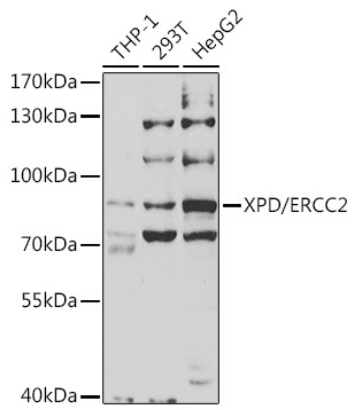
Affinity purification

Storage

Store at -20°C. Avoid freeze / thaw cycles.

Buffer: PBS with 0.02% sodium azide, 50% glycerol, pH 7.3.

Validation Data

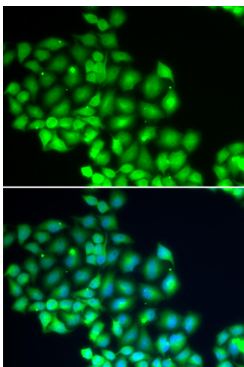


Western blot analysis of extracts of various cell lines, using XPD/XPD/ERCC2 antibody (A5640) at 1:1000 dilution.

Secondary antibody: HRP Goat Anti-Rabbit IgG (H+L) (AS014) at 1:10000 dilution.

Lysates/proteins: 25µg per lane.

Blocking buffer: 3% nonfat dry milk in TBST.



Immunofluorescence analysis of HeLa cells using XPD/XPD/ERCC2 antibody (A5640).
Blue: DAPI for nuclear staining.