

CD41/ITGA2B Rabbit pAb

Catalog No.: A5680 **2 Publications**

Basic Information

Observed MW

135kDa

Calculated MW

113kDa

Category

Primary antibody

Applications

ELISA, WB

Cross-Reactivity

Human, Mouse

Background

This gene encodes a member of the integrin alpha chain family of proteins. The encoded preproprotein is proteolytically processed to generate light and heavy chains that associate through disulfide linkages to form a subunit of the alpha-IIb/beta-3 integrin cell adhesion receptor. This receptor plays a crucial role in the blood coagulation system, by mediating platelet aggregation. Mutations in this gene are associated with platelet-type bleeding disorders, which are characterized by a failure of platelet aggregation, including Glanzmann thrombasthenia.

Recommended Dilutions

WB 1:500 - 1:2000

Immunogen Information

Gene ID

3674

Swiss Prot

P08514

Immunogen

Recombinant fusion protein containing a sequence corresponding to amino acids 693-993 of human CD41/CD41/ITGA2B (NP_000410.2).

Synonyms

GT; GT1; GTA; CD41; GP2B; HPA3; CD41B; GPIIb; BDPLT2; BDPLT16; PPP1R93; CD41/ITGA2B

Contact

☎ | 400-999-6126

✉ | cn.market@abclonal.com.cn

🌐 | www.abclonal.com.cn

Product Information

Source

Rabbit

Isotype

IgG

Purification

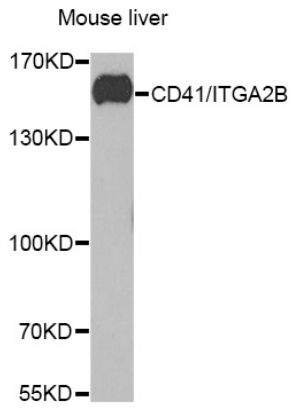
Affinity purification

Storage

Store at -20°C. Avoid freeze / thaw cycles.

Buffer: PBS with 0.02% sodium azide, 50% glycerol, pH 7.3.

Validation Data



Western blot analysis of lysates from mouse liver, using CD41/ITGA2B Rabbit pAb (A5680) at 1:1000 dilution.

Secondary antibody: HRP Goat Anti-Rabbit IgG (H+L) (AS014) at 1:10000 dilution.

Lysates/proteins: 25µg per lane.

Blocking buffer: 3% nonfat dry milk in TBST.

Detection: ECL Basic Kit (RM00020).

Exposure time: 30s.