

# RPS6KA5 Rabbit pAb

Catalog No.: A5699 **2 Publications**

## Basic Information

### Observed MW

90kDa

### Calculated MW

90kDa

### Category

Primary antibody

### Applications

ELISA, WB

### Cross-Reactivity

Human, Mouse, Rat

## Background

Enables ATP binding activity and protein serine/threonine kinase activity. Involved in several processes, including histone-serine phosphorylation; positive regulation of histone modification; and regulation of transcription, DNA-templated. Located in cytoplasm and nucleoplasm.

## Recommended Dilutions

WB 1:500 - 1:1000

## Immunogen Information

### Gene ID

9252

### Swiss Prot

O75582

### Immunogen

A synthetic peptide corresponding to a sequence within amino acids 700-800 of human RPS6KA5 (NP\_004746.2).

### Synonyms

MSK1; RLPK; MSPK1; RPS6KA5

## Contact

☎ | 400-999-6126

✉ | [cn.market@abclonal.com.cn](mailto:cn.market@abclonal.com.cn)

🌐 | [www.abclonal.com.cn](http://www.abclonal.com.cn)

## Product Information

### Source

Rabbit

### Isotype

IgG

### Purification

Affinity purification

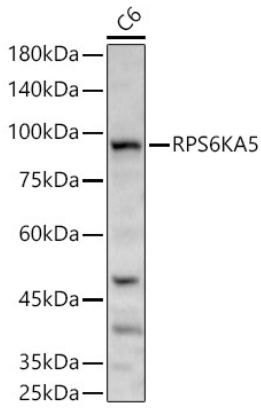
### Storage

Store at -20°C. Avoid freeze / thaw cycles.

Buffer: PBS with 0.05% proclin300, 50% glycerol, pH7.3.

## Validation Data

---



Western blot analysis of C6, using RPS6KA5 antibody (A5699) at 1:600 dilution.  
Secondary antibody: HRP Goat Anti-Rabbit IgG (H+L) (AS014) at 1:10000 dilution.  
Lysates/proteins: 25µg per lane.  
Blocking buffer: 3% nonfat dry milk in TBST.  
Detection: ECL Basic Kit (RM00020).  
Exposure time: 90s.