

# SH3GL2 Rabbit pAb

Catalog No.: A5701

1 Publications

## Basic Information

### Observed MW

38kDa/40kDa

### Calculated MW

40kDa

### Category

Primary antibody

### Applications

ELISA, WB, IF/ICC

### Cross-Reactivity

Human, Mouse

## Background

Enables identical protein binding activity. Involved in negative regulation of blood-brain barrier permeability; negative regulation of gene expression; and negative regulation of protein phosphorylation. Located in perinuclear region of cytoplasm.

## Recommended Dilutions

WB 1:500 - 1:2000

IF/ICC 1:50 - 1:200

## Immunogen Information

### Gene ID

6456

### Swiss Prot

Q99962

### Immunogen

Recombinant fusion protein containing a sequence corresponding to amino acids 1-270 of human SH3GL2 (NP\_003017.1).

### Synonyms

CNSA2; SH3P4; EEN-B1; SH3D2A; SH3GL2

## Contact

☎ | 400-999-6126

✉ | [cn.market@abclonal.com.cn](mailto:cn.market@abclonal.com.cn)

🌐 | [www.abclonal.com.cn](http://www.abclonal.com.cn)

## Product Information

### Source

Rabbit

### Isotype

IgG

### Purification

Affinity purification

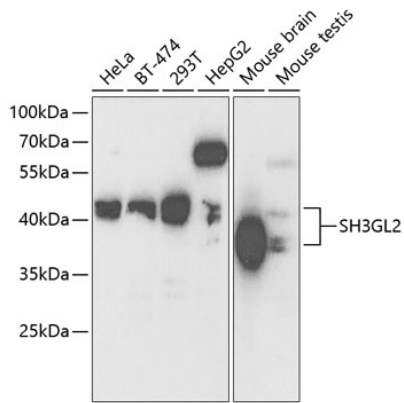
### Storage

Store at -20°C. Avoid freeze / thaw cycles.

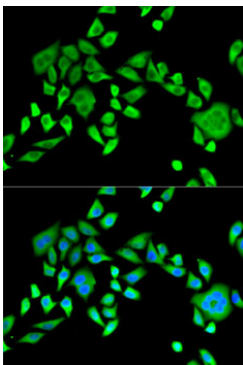
Buffer: PBS with 0.02% sodium azide, 50% glycerol, pH 7.3.

## Validation Data

---



Western blot analysis of extracts of various cell lines, using SH3GL2 antibody (A5701) at 1:1000 dilution.  
Secondary antibody: HRP Goat Anti-Rabbit IgG (H+L) (AS014) at 1:10000 dilution.  
Lysates/proteins: 25µg per lane.  
Blocking buffer: 3% nonfat dry milk in TBST.  
Detection: ECL Basic Kit (RM00020).  
Exposure time: 90s.



Immunofluorescence analysis of HeLa cells using SH3GL2 antibody (A5701). Blue: DAPI for nuclear staining.