

[KO Validated] SIRT3 Rabbit pAb

Catalog No.: A5718 **KO** **Validated** **10 Publications**

Basic Information

Observed MW

28kDa

Calculated MW

44kDa

Category

Primary antibody

Applications

ELISA, WB, IHC-P, IF/ICC

Cross-Reactivity

Human, Mouse, Rat

Background

SIRT3 encodes a member of the sirtuin family of class III histone deacetylases, homologs to the yeast Sir2 protein. The encoded protein is found exclusively in mitochondria, where it can eliminate reactive oxygen species, inhibit apoptosis, and prevent the formation of cancer cells. SIRT3 has far-reaching effects on nuclear gene expression, cancer, cardiovascular disease, neuroprotection, aging, and metabolic control.

Recommended Dilutions

WB	1:500 - 1:1000
IHC-P	1:20 - 1:50
IF/ICC	1:50 - 1:200

Immunogen Information

Gene ID

23410

Swiss Prot

Q9NTG7

Immunogen

A synthetic peptide corresponding to a sequence within amino acids 299-399 of human SIRT3 (NP_036371.1).

Synonyms

SIR2L3

Contact

		400-999-6126
		cn.market@abclonal.com.cn
		www.abclonal.com.cn

Product Information

Source

Rabbit

Isotype

IgG

Purification

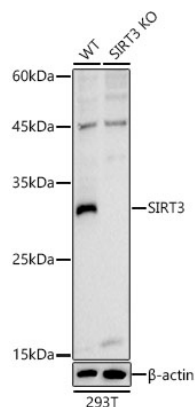
Affinity purification

Storage

Store at -20°C. Avoid freeze / thaw cycles.

Buffer: PBS with 0.05% proclin300, 50% glycerol, pH7.3.

Validation Data



Western blot analysis of extracts from wild type (WT) and SIRT3 knockout (KO) 293T cells, using SIRT3 antibody (A5718) at 1:1000 dilution.

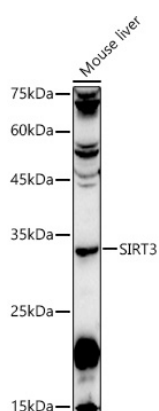
Secondary antibody: HRP Goat Anti-Rabbit IgG (H+L) (AS014) at 1:10000 dilution.

Lysates/proteins: 25 μ g per lane.

Blocking buffer: 3% nonfat dry milk in TBST.

Detection: ECL Basic Kit (RM00020).

Exposure time: 10s.



Western blot analysis of extracts of Mouse liver, using SIRT3 antibody (A5718) at 1:1000 dilution.

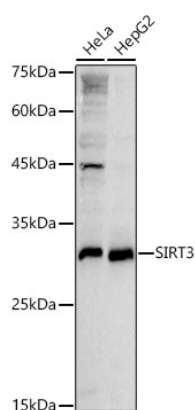
Secondary antibody: HRP Goat Anti-Rabbit IgG (H+L) (AS014) at 1:10000 dilution.

Lysates/proteins: 25 μ g per lane.

Blocking buffer: 3% nonfat dry milk in TBST.

Detection: ECL Basic Kit (RM00020).

Exposure time: 90s.



Western blot analysis of extracts of various cell lines, using SIRT3 antibody (A5718) at 1:1000 dilution.

Secondary antibody: HRP Goat Anti-Rabbit IgG (H+L) (AS014) at 1:10000 dilution.

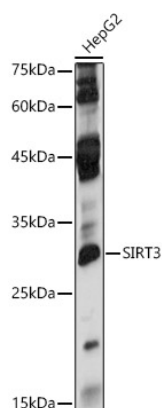
Lysates/proteins: 25 μ g per lane.

Blocking buffer: 3% nonfat dry milk in TBST.

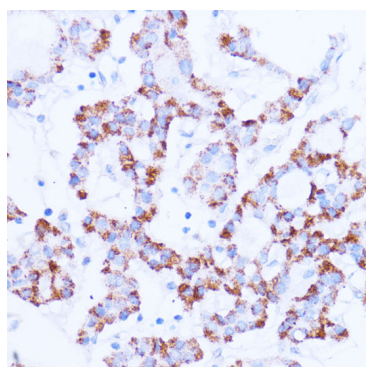
Detection: ECL Basic Kit (RM00020).

Exposure time: 10s.

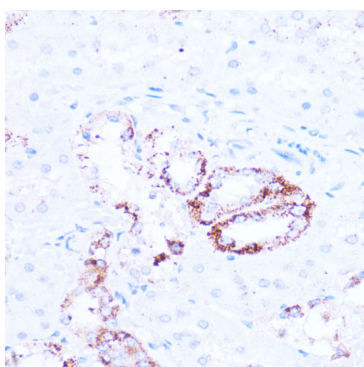
Validation Data



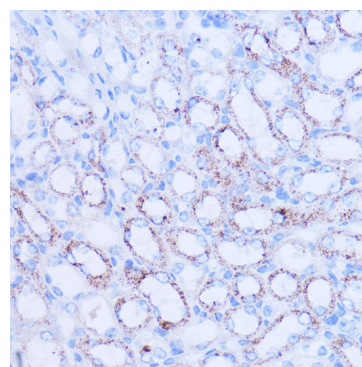
Western blot analysis of extracts of HepG2 cells, using SIRT3 antibody (A5718) at 1:1000 dilution.
Secondary antibody: HRP Goat Anti-Rabbit IgG (H+L) (AS014) at 1:10000 dilution.
Lysates/proteins: 25µg per lane.
Blocking buffer: 3% nonfat dry milk in TBST.
Detection: ECL Basic Kit (RM00020).
Exposure time: 180s.



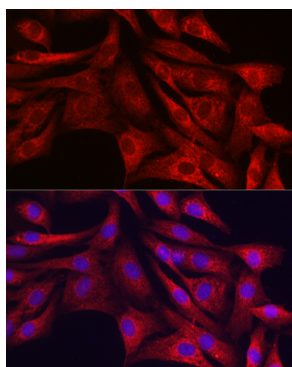
Immunohistochemistry analysis of paraffin-embedded human thyroid cancer using SIRT3 antibody (A5718) at dilution of 1:100 (40x lens). Perform microwave antigen retrieval with 10 mM PBS buffer pH 7.2 before commencing with IHC staining protocol.



Immunohistochemistry analysis of paraffin-embedded rat kidney using SIRT3 antibody (A5718) at dilution of 1:100 (40x lens). Perform microwave antigen retrieval with 10 mM PBS buffer pH 7.2 before commencing with IHC staining protocol.



Immunohistochemistry analysis of paraffin-embedded mouse kidney using SIRT3 antibody (A5718) at dilution of 1:100 (40x lens). Perform microwave antigen retrieval with 10 mM PBS buffer pH 7.2 before commencing with IHC staining protocol.



Immunofluorescence analysis of NIH/3T3 cells using SIRT3 Rabbit pAb (A5718) at dilution of 1:100 (40x lens). Blue: DAPI for nuclear staining.