

CDC7 Rabbit pAb

Catalog No.: A5738

Basic Information

Observed MW

70kDa

Calculated MW

64kDa

Category

Primary antibody

Applications

ELISA, WB

Cross-Reactivity

Human

Background

This gene encodes a cell division cycle protein with kinase activity that is critical for the G1/S transition. The yeast homolog is also essential for initiation of DNA replication as cell division occurs. Overexpression of this gene product may be associated with neoplastic transformation for some tumors. Multiple alternatively spliced transcript variants that encode the same protein have been detected.

Recommended Dilutions

WB 1:500 - 1:2000

Immunogen Information

Gene ID

8317

Swiss Prot

O00311

Immunogen

Recombinant fusion protein containing a sequence corresponding to amino acids 275-574 of human CDC7 (NP_001127892.1).

Synonyms

Hsk1; CDC7L1; HsCDC7; huCDC7; CDC7

Contact

☎ | 400-999-6126

✉ | cn.market@abclonal.com.cn

🌐 | www.abclonal.com.cn

Product Information

Source

Rabbit

Isotype

IgG

Purification

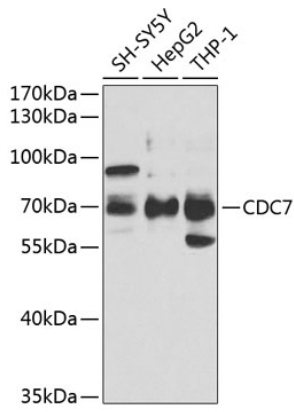
Affinity purification

Storage

Store at -20°C. Avoid freeze / thaw cycles.

Buffer: PBS with 0.02% sodium azide, 50% glycerol, pH 7.3.

Validation Data



Western blot analysis of extracts of various cell lines, using CDC7 antibody (A5738) at 1:1000 dilution.
Secondary antibody: HRP Goat Anti-Rabbit IgG (H+L) (AS014) at 1:10000 dilution.
Lysates/proteins: 25µg per lane.
Blocking buffer: 3% nonfat dry milk in TBST.
Detection: ECL Basic Kit (RM00020).
Exposure time: 5s.