

TOPBP1 Rabbit pAb

Catalog No.: A5781 **2 Publications**

Basic Information

Observed MW

200kDa

Calculated MW

171kDa

Category

Primary antibody

Applications

ELISA, WB, IHC-P

Cross-Reactivity

Human, Mouse, Rat

Background

This gene encodes a binding protein which interacts with the C-terminal region of topoisomerase II beta. This interaction suggests a supportive role for this protein in the catalytic reactions of topoisomerase II beta through transient breakages of DNA strands.

Recommended Dilutions

WB	1:100 - 1:500
IHC-P	1:50 - 1:200

Immunogen Information

Gene ID

11073

Swiss Prot

Q92547

Immunogen

Recombinant fusion protein containing a sequence corresponding to amino acids 1253-1522 of human TOPBP1 (NP_008958.2).

Synonyms

Dpb11; TOP2BP1; TOPBP1

Contact

 | 400-999-6126

 | cn.market@abclonal.com.cn

 | www.abclonal.com.cn

Product Information

Source

Rabbit

Isotype

IgG

Purification

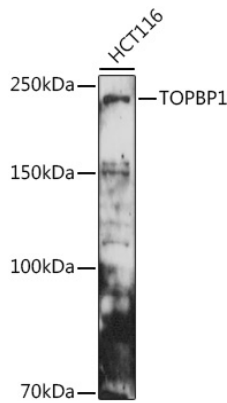
Affinity purification

Storage

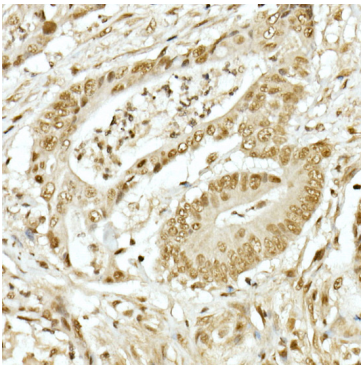
Store at -20°C. Avoid freeze / thaw cycles.

Buffer: PBS with 0.05% proclin300, 50% glycerol, pH7.3.

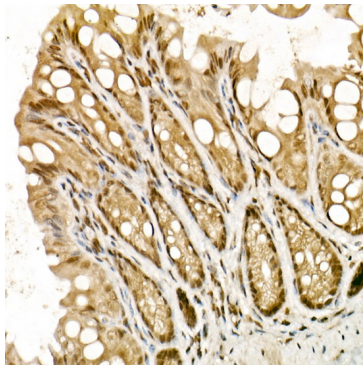
Validation Data



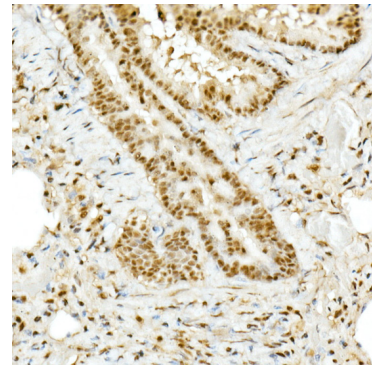
Western blot analysis of lysates from HCT116 cells, using TOPBP1 Rabbit pAb (A5781) at 1:500 dilution. Secondary antibody: HRP Goat Anti-Rabbit IgG (H+L) (AS014) at 1:10000 dilution. Lysates/proteins: 25µg per lane. Blocking buffer: 3% nonfat dry milk in TBST. Detection: ECL Basic Kit (RM00020). Exposure time: 90s.



Immunohistochemistry analysis of paraffin-embedded Human colon carcinoma using TOPBP1 Rabbit pAb (A5781) at dilution of 1:50 (40x lens). Perform high pressure antigen retrieval with 10 mM citrate buffer pH 6.0 before commencing with IHC staining protocol.



Immunohistochemistry analysis of paraffin-embedded Mouse intestine using TOPBP1 Rabbit pAb (A5781) at dilution of 1:50 (40x lens). Perform high pressure antigen retrieval with 10 mM citrate buffer pH 6.0 before commencing with IHC staining protocol.



Immunohistochemistry analysis of paraffin-embedded Rat lung using TOPBP1 Rabbit pAb (A5781) at dilution of 1:50 (40x lens). Perform high pressure antigen retrieval with 10 mM citrate buffer pH 6.0 before commencing with IHC staining protocol.