

Cortactin Rabbit pAb

Catalog No.: A5795

1 Publications

Basic Information

Observed MW

80kDa

Calculated MW

62kDa

Category

Primary antibody

Applications

ELISA,WB,IF/ICC

Cross-Reactivity

Human, Mouse, Rat

Background

This gene is overexpressed in breast cancer and squamous cell carcinomas of the head and neck. The encoded protein is localized in the cytoplasm and in areas of the cell-substratum contacts. This gene has two roles: (1) regulating the interactions between components of adherens-type junctions and (2) organizing the cytoskeleton and cell adhesion structures of epithelia and carcinoma cells. During apoptosis, the encoded protein is degraded in a caspase-dependent manner. The aberrant regulation of this gene contributes to tumor cell invasion and metastasis. Three splice variants that encode different isoforms have been identified for this gene.

Recommended Dilutions

WB 1:500 - 1:1000

IF/ICC 1:50 - 1:200

Immunogen Information

Gene ID

2017

Swiss Prot

Q14247

Immunogen

Recombinant fusion protein containing a sequence corresponding to amino acids 301-400 of human Cortactin (NP_005222.2).

Synonyms

EMS1; Cortactin

Contact

 | 400-999-6126 | cn.market@abclonal.com.cn | www.abclonal.com.cn

Product Information

Source

Rabbit

Isotype

IgG

Purification

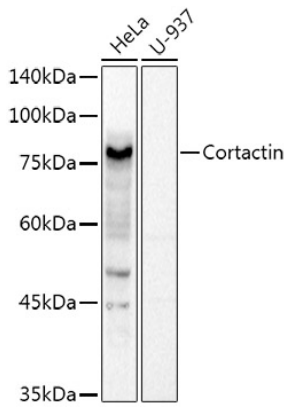
Affinity purification

Storage

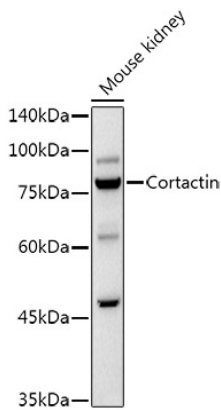
Store at -20°C. Avoid freeze / thaw cycles.

Buffer: PBS with 0.05% proclin300,50% glycerol,pH7.3.

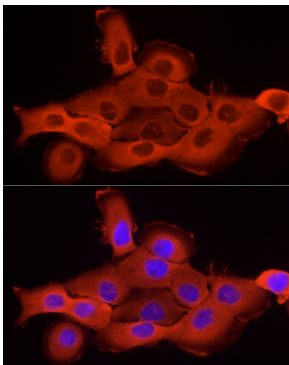
Validation Data



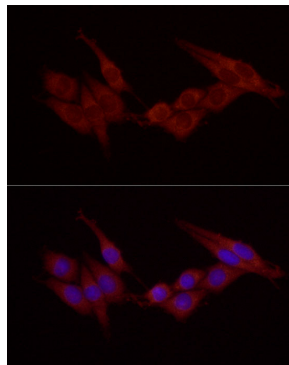
Western blot analysis of extracts of various cell lines, using Cortactin Rabbit pAb antibody (A5795) at 1:1000 dilution.
Secondary antibody: HRP Goat Anti-Rabbit IgG (H+L) (AS014) at 1:10000 dilution.
Lysates/proteins: 25µg per lane.
Blocking buffer: 3% nonfat dry milk in TBST.
Detection: ECL Basic Kit (RM00020).
Exposure time: 0.5s.



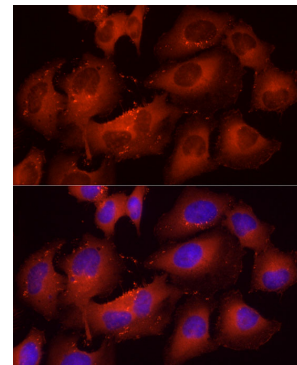
Western blot analysis of extracts of Mouse kidney, using Cortactin Rabbit pAb antibody (A5795) at 1:1000 dilution.
Secondary antibody: HRP Goat Anti-Rabbit IgG (H+L) (AS014) at 1:10000 dilution.
Lysates/proteins: 25µg per lane.
Blocking buffer: 3% nonfat dry milk in TBST.
Detection: ECL Basic Kit (RM00020).
Exposure time: 10s.



Immunofluorescence analysis of A-431 using Cortactin antibody (A5795) at dilution of 1:25 (40x lens). Blue: DAPI for nuclear staining.

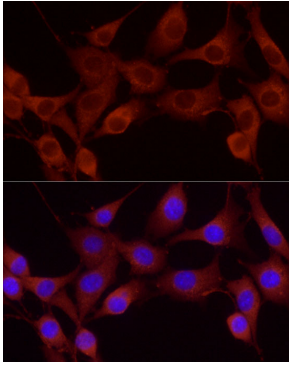


Immunofluorescence analysis of PC-12 using Cortactin antibody (A5795) at dilution of 1:25 (40x lens). Blue: DAPI for nuclear staining.



Immunofluorescence analysis of HeLa using Cortactin antibody (A5795) at dilution of 1:25 (40x lens). Blue: DAPI for nuclear staining.

Validation Data



Immunofluorescence analysis of NIH-3T3 using Cortactin antibody (A5795) at dilution of 1:25 (40x lens). Blue: DAPI for nuclear staining.