

# PP2A-A $\alpha$ /PR65 $\alpha$ /PPP2R1A Rabbit pAb

Catalog No.: A5799 **1 Publications**

## Basic Information

### Observed MW

65kDa

### Calculated MW

65kDa

### Category

Primary antibody

### Applications

ELISA, WB, IF/ICC

### Cross-Reactivity

Human, Mouse, Rat

## Background

This gene encodes a constant regulatory subunit of protein phosphatase 2. Protein phosphatase 2 is one of the four major Ser/Thr phosphatases, and it is implicated in the negative control of cell growth and division. It consists of a common heteromeric core enzyme, which is composed of a catalytic subunit and a constant regulatory subunit, that associates with a variety of regulatory subunits. The constant regulatory subunit A serves as a scaffolding molecule to coordinate the assembly of the catalytic subunit and a variable regulatory B subunit. This gene encodes an alpha isoform of the constant regulatory subunit A. Alternatively spliced transcript variants have been described.

## Recommended Dilutions

|               |                |
|---------------|----------------|
| <b>WB</b>     | 1:500 - 1:2000 |
| <b>IF/ICC</b> | 1:10 - 1:100   |

## Immunogen Information

### Gene ID

5518

### Swiss Prot

P30153

### Immunogen

Recombinant fusion protein containing a sequence corresponding to amino acids 1-270 of human PP2A-Aalpha/PR65 $\alpha$ /PP2A-A $\alpha$ /PR65 $\alpha$ /PPP2R1A (NP\_055040.2).

### Synonyms

MRD36; PP2AA; PR65A; PP2AAALPHA; PP2A-Aalpha; PP2A-A $\alpha$ /PR65 $\alpha$ /PPP2R1A

## Contact

☎ | 400-999-6126

✉ | [cn.market@abclonal.com.cn](mailto:cn.market@abclonal.com.cn)

🌐 | [www.abclonal.com.cn](http://www.abclonal.com.cn)

## Product Information

### Source

Rabbit

### Isotype

IgG

### Purification

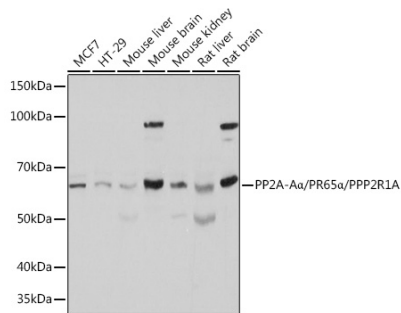
Affinity purification

### Storage

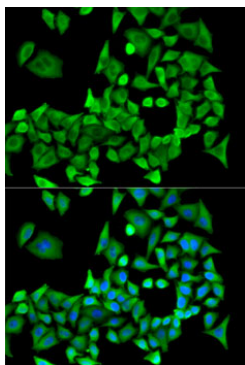
Store at -20°C. Avoid freeze / thaw cycles.

Buffer: PBS with 0.02% sodium azide, 50% glycerol, pH7.3.

## Validation Data



Western blot analysis of extracts of various cell lines, using PP2A-A $\alpha$ /PR65 $\alpha$ /PP2A-A $\alpha$ /PR65 $\alpha$ /PPP2R1A Polyclonal Antibody (A5799) at 1:500 dilution.  
Secondary antibody: HRP Goat Anti-Rabbit IgG (H+L) (AS014) at 1:10000 dilution.  
Lysates/proteins: 25 $\mu$ g per lane.  
Blocking buffer: 3% nonfat dry milk in TBST.  
Detection: ECL Basic Kit (RM00020).  
Exposure time: 1s.



Immunofluorescence analysis of U2OS cells using PP2A-A $\alpha$ /PR65 $\alpha$ /PP2A-A $\alpha$ /PR65 $\alpha$ /PPP2R1A antibody (A5799). Blue: DAPI for nuclear staining.