

Septin 2 Rabbit pAb

Catalog No.: A5801

Basic Information

Observed MW

41kDa

Calculated MW

41kDa

Category

Primary antibody

Applications

ELISA, WB, IF/ICC

Cross-Reactivity

Human, Mouse

Background

Enables identical protein binding activity. Predicted to be involved in several processes, including cilium assembly; regulation of exocytosis; and smoothed signaling pathway. Predicted to act upstream of or within regulation of L-glutamate import across plasma membrane and regulation of protein localization. Located in several cellular components, including cytoskeleton; photoreceptor connecting cilium; and sperm annulus. Part of septin complex.

Recommended Dilutions

WB	1:500 - 1:2000
IF/ICC	1:50 - 1:100

Immunogen Information

Gene ID

4735

Swiss Prot

Q15019

Immunogen

Recombinant fusion protein containing a sequence corresponding to amino acids 112-361 of human Septin 2 (NP_004395.1).

Synonyms

DIFF6; NEDD5; SEPT2; NEDD-5; Pnut13; hNedd5; Septin 2

Contact

 | 400-999-6126

 | cn.market@abclonal.com.cn

 | www.abclonal.com.cn

Product Information

Source

Rabbit

Isotype

IgG

Purification

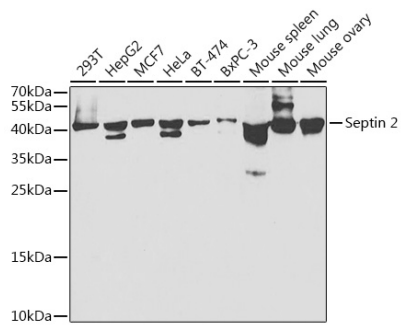
Affinity purification

Storage

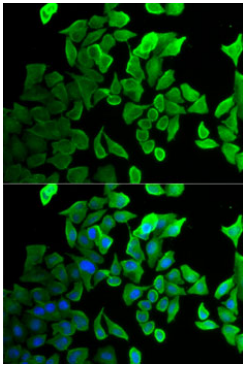
Store at -20°C. Avoid freeze / thaw cycles.

Buffer: PBS with 0.02% sodium azide, 50% glycerol, pH 7.3.

Validation Data



Western blot analysis of extracts of various cell lines, using Septin 2 antibody (A5801) at 1:1000 dilution.
Secondary antibody: HRP Goat Anti-Rabbit IgG (H+L) (AS014) at 1:10000 dilution.
Lysates/proteins: 25µg per lane.
Blocking buffer: 3% nonfat dry milk in TBST.
Detection: ECL Basic Kit (RM00020).
Exposure time: 30s.



Immunofluorescence analysis of U2OS cells using Septin 2 antibody (A5801). Blue: DAPI for nuclear staining.