

GRO alpha Rabbit pAb

Catalog No.: A5802

3 Publications

Basic Information

Observed MW

11kDa

Calculated MW

11kDa

Category

Primary antibody

Applications

ELISA, WB, IF/ICC

Cross-Reactivity

Human, Rat

Background

This antimicrobial gene encodes a member of the CXC subfamily of chemokines. The encoded protein is a secreted growth factor that signals through the G-protein coupled receptor, CXC receptor 2. This protein plays a role in inflammation and as a chemoattractant for neutrophils. Aberrant expression of this protein is associated with the growth and progression of certain tumors. A naturally occurring processed form of this protein has increased chemotactic activity. Alternate splicing results in coding and non-coding variants of this gene. A pseudogene of this gene is found on chromosome 4.

Recommended Dilutions

WB 1:500 - 1:1000

IF/ICC 1:50 - 1:200

Immunogen Information

Gene ID

2919

Swiss Prot

P09341

Immunogen

A synthetic peptide corresponding to a sequence within amino acids 1-107 of human GRO alpha (NP_001502.1).

Synonyms

FSP; GRO1; GROa; MGSA; NAP-3; SCYB1; MGSA-a; GRO alpha

Contact

 | 400-999-6126 | cn.market@abclonal.com.cn | www.abclonal.com.cn

Product Information

Source

Rabbit

Isotype

IgG

Purification

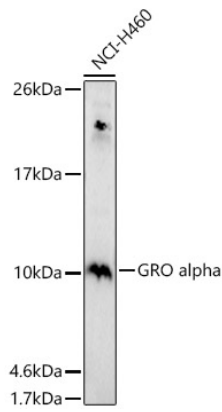
Affinity purification

Storage

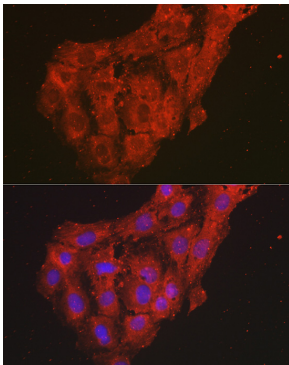
Store at -20°C. Avoid freeze / thaw cycles.

Buffer: PBS with 0.05% proclin300, 50% glycerol, pH7.3.

Validation Data



Western blot analysis of extracts of NCI-H460 cells, using GRO alpha antibody (A5802) at 1:1000 dilution.
Secondary antibody: HRP Goat Anti-Rabbit IgG (H+L) (AS014) at 1:10000 dilution.
Lysates/proteins: 25µg per lane.
Blocking buffer: 3% nonfat dry milk in TBST.
Detection: ECL Basic Kit (RM00020).
Exposure time: 180s.



Immunofluorescence analysis of C6 cells using GRO alpha Rabbit pAb (A5802) at dilution of 1:100 (40x lens). Blue: DAPI for nuclear staining.