

# BTAf1 Rabbit pAb

Catalog No.: A5811

## Basic Information

### Observed MW

250kDa

### Calculated MW

207kDa

### Category

Primary antibody

### Applications

WB,IP,ELISA,ChIP

### Cross-Reactivity

Human, Rat

## Background

This gene encodes a TAF (TATA box-binding protein-associated factor), which associates with TBP (TATA box-binding protein) to form the B-TFIID complex that is required for transcription initiation of genes by RNA polymerase II. This TAF has DNA-dependent ATPase activity, which drives the dissociation of TBP from DNA, freeing the TBP to associate with other TATA boxes or TATA-less promoters.

## Recommended Dilutions

**WB** 1:500 - 1:2000

**IP** 0.5µg-4µg antibody for  
200µg-400µg extracts of  
whole cells

**ELISA** Recommended starting  
concentration is 1 µg/mL.  
Please optimize the  
concentration based on  
your specific assay  
requirements.

**ChIP** 5µg antibody for  
10µg-15µg of Chromatin

## Immunogen Information

### Gene ID

9044

### Swiss Prot

O14981

### Immunogen

Recombinant fusion protein containing a sequence corresponding to amino acids 1600-1849 of human BTAf1 (NP\_003963.1).

### Synonyms

MOT1; TAF172; TAFII170; TAF(II)170; BTAf1

## Product Information

### Source

Rabbit

### Isotype

IgG

### Purification

Affinity purification

### Storage

Store at -20°C. Avoid freeze / thaw cycles.

Buffer: PBS with 0.02% sodium azide,50% glycerol,pH7.3.

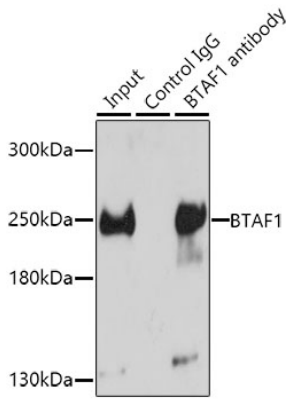
## Contact

☎ | 400-999-6126

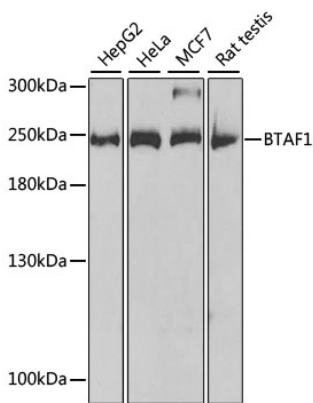
✉ | [cn.market@abclonal.com.cn](mailto:cn.market@abclonal.com.cn)

🌐 | [www.abclonal.com.cn](http://www.abclonal.com.cn)

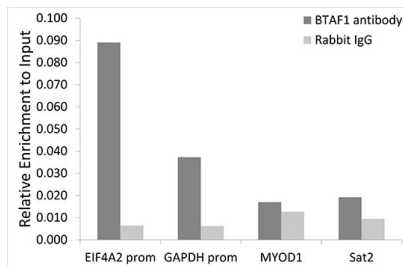
## Validation Data



Immunoprecipitation analysis of 150 µg extracts of HeLa cells using 3 µg BTAf1 antibody (A5811). Western blot was performed from the immunoprecipitate using BTAf1 antibody (A5811) at a dilution of 1:500.



Western blot analysis of various lysates using BTAf1 Rabbit pAb (A5811) at 1:1000 dilution. Secondary antibody: HRP-conjugated Goat anti-Rabbit IgG (H+L) (AS014) at 1:10000 dilution. Lysates/proteins: 25µg per lane. Blocking buffer: 3% nonfat dry milk in TBST. Detection: ECL Basic Kit (RM00020).



Chromatin immunoprecipitation analysis of extracts of HeLa cells, using BTAf1 antibody (A5811) and rabbit IgG. The amount of immunoprecipitated DNA was checked by quantitative PCR. Histogram was constructed by the ratios of the immunoprecipitated DNA to the input.