

DDX20 Rabbit pAb

Catalog No.: A5817

Basic Information

Observed MW

110kDa

Calculated MW

92kDa

Category

Primary antibody

Applications

ELISA,WB,IF/ICC

Cross-Reactivity

Human, Mouse, Rat

Background

DEAD box proteins, characterized by the conserved motif Asp-Glu-Ala-Asp (DEAD), are putative RNA helicases. They are implicated in a number of cellular processes involving alteration of RNA secondary structure such as translation initiation, nuclear and mitochondrial splicing, and ribosome and spliceosome assembly. Based on their distribution patterns, some members of this family are believed to be involved in embryogenesis, spermatogenesis, and cellular growth and division. This gene encodes a DEAD box protein, which has an ATPase activity and is a component of the survival of motor neurons (SMN) complex. This protein interacts directly with SMN, the spinal muscular atrophy gene product, and may play a catalytic role in the function of the SMN complex on RNPs.

Recommended Dilutions

WB	1:500 - 1:2000
IF/ICC	1:10 - 1:100

Immunogen Information

Gene ID

11218

Swiss Prot

Q9UHI6

Immunogen

Recombinant fusion protein containing a sequence corresponding to amino acids 25-280 of human DDX20 (NP_009135.4).

Synonyms

DP103; GEMIN3; DDX20

Contact

 | 400-999-6126

 | cn.market@abclonal.com.cn

 | www.abclonal.com.cn

Product Information

Source

Rabbit

Isotype

IgG

Purification

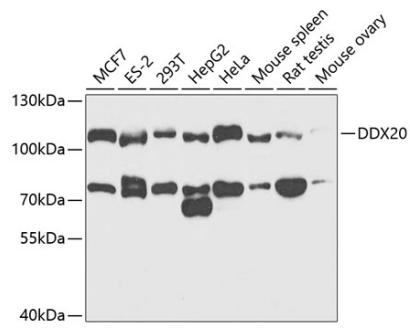
Affinity purification

Storage

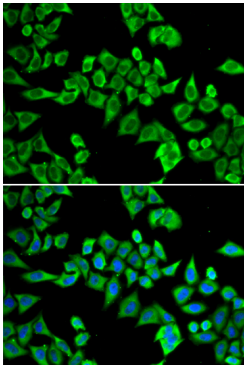
Store at -20°C. Avoid freeze / thaw cycles.

Buffer: PBS with 0.02% sodium azide,50% glycerol,pH7.3.

Validation Data



Western blot analysis of extracts of various cell lines, using DDX20 antibody (A5817) at 1:1000 dilution.
Secondary antibody: HRP Goat Anti-Rabbit IgG (H+L) (AS014) at 1:10000 dilution.
Lysates/proteins: 25 μ g per lane.
Blocking buffer: 3% nonfat dry milk in TBST.
Detection: ECL Enhanced Kit (RM00021).
Exposure time: 90s.



Immunofluorescence analysis of HeLa cells using DDX20 antibody (A5817). Blue: DAPI for nuclear staining.