

KDM4B/JMJD2B Rabbit pAb

Catalog No.: A5824

Basic Information

Observed MW

150kDa

Calculated MW

122kDa

Category

Primary antibody

Applications

WB,ELISA

Cross-Reactivity

Human, Mouse

Background

Enables histone H3-methyl-lysine-36 demethylase activity and histone H3-methyl-lysine-9 demethylase activity. Involved in histone H3-K36 demethylation and histone H3-K9 demethylation. Located in cytosol and nucleoplasm. Implicated in autosomal dominant non-syndromic intellectual disability; breast cancer; colorectal cancer; malignant peripheral nerve sheath tumor; and stomach cancer. Biomarker of several diseases, including alopecia areata; lung cancer; medulloblastoma; prostate cancer; and stomach cancer.

Recommended Dilutions

WB 1:500 - 1:1000

ELISA Recommended starting concentration is 1 µg/mL. Please optimize the concentration based on your specific assay requirements.

Immunogen Information

Gene ID

23030

Swiss Prot

O94953

Immunogen

Recombinant fusion protein containing a sequence corresponding to amino acids 1-365 of human KDM4B/JMJD2B (NP_055830.1).

Synonyms

MRD65; JMJD2B; TDRD14B; KDM4B/JMJD2B

Contact

 | 400-999-6126

 | cn.market@abclonal.com.cn

 | www.abclonal.com.cn

Product Information

Source

Rabbit

Isotype

IgG

Purification

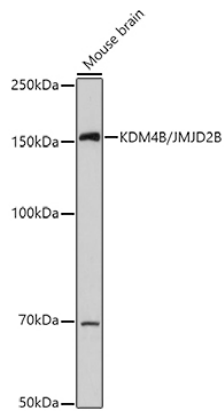
Affinity purification

Storage

Store at -20°C. Avoid freeze / thaw cycles.

Buffer: PBS with 0.09% Sodium azide,50% glycerol,pH7.3.

Validation Data



Western blot analysis of lysates from Mouse brain, using (A5824) at 1:1000 dilution.
Secondary antibody: HRP-conjugated Goat anti-Rabbit IgG (H+L) (AS014) at 1:10000 dilution.
Lysates/proteins: 25µg per lane.
Blocking buffer: 3% nonfat dry milk in TBST.
Detection: ECL Basic Kit (RM00020).
Exposure time: 30s.