

[KO Validated] PRMT2 Rabbit pAb

Catalog No.: A5835 **KO Validated** **1 Publications**

Basic Information

Observed MW

56kDa

Calculated MW

49kDa

Category

Primary antibody

Applications

WB,IHC-P,IF/ICC,ELISA

Cross-Reactivity

Human, Mouse, Rat

Background

Enables several functions, including nuclear receptor binding activity; peroxisome proliferator activated receptor binding activity; and protein homodimerization activity. Involved in several processes, including histone methylation; regulation of androgen receptor signaling pathway; and regulation of transcription, DNA-templated. Located in cytosol and nucleoplasm.

Recommended Dilutions

WB	1:500 - 1:2000
IHC-P	1:50 - 1:200
IF/ICC	1:50 - 1:100
ELISA	Recommended starting concentration is 1 µg/mL. Please optimize the concentration based on your specific assay requirements.

Immunogen Information

Gene ID

3275

Swiss Prot

P55345

Immunogen

Recombinant protein (or fragment). This information is considered to be commercially sensitive.

Synonyms

HRMT1L1; T2

Contact

	400-999-6126
	cn.market@abclonal.com.cn
	www.abclonal.com.cn

Product Information

Source

Rabbit

Isotype

IgG

Purification

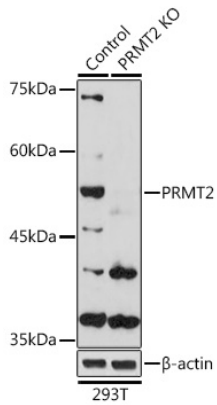
Affinity purification

Storage

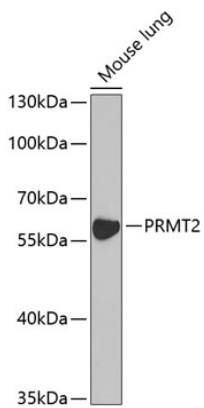
Store at -20°C. Avoid freeze / thaw cycles.

Buffer: PBS containing 50% glycerol, preserved with proclin300 or sodium azide (as specified on the Certificate of Analysis), pH 7.3.

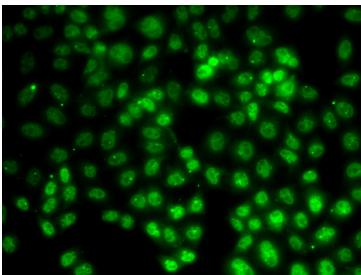
Validation Data



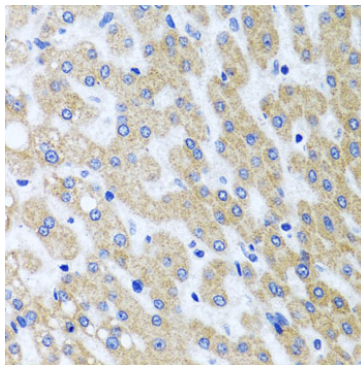
Western blot analysis of lysates from wild type (WT) and PRMT2 knockout (KO) 293T cells, using [KO Validated] PRMT2 Rabbit pAb (A5835) at 1:1000 dilution. Secondary antibody: HRP-conjugated Goat anti-Rabbit IgG (H+L) (AS014) at 1:10000 dilution. Lysates/proteins: 25µg per lane. Blocking buffer: 3% nonfat dry milk in TBST. Detection: ECL Basic Kit (RM00020). Exposure time: 90s.



Western blot analysis of lysates from mouse lung, using [KO Validated] PRMT2 Rabbit pAb (A5835) at 1:1000 dilution. Secondary antibody: HRP-conjugated Goat anti-Rabbit IgG (H+L) (AS014) at 1:10000 dilution. Lysates/proteins: 25µg per lane. Blocking buffer: 3% nonfat dry milk in TBST. Detection: ECL Enhanced Kit (RM00021). Exposure time: 90s.



Immunofluorescence analysis of HeLa cells using [KO Validated] PRMT2 Rabbit pAb (A5835). Secondary antibody: Cy3-conjugated Goat anti-Rabbit IgG (H+L) (AS007) at 1:500 dilution.



Immunohistochemistry analysis of paraffin-embedded Human liver tissue using [KO Validated] PRMT2 Rabbit pAb (A5835) at dilution of 1:100 (40x lens). Microwave antigen retrieval performed with 0.01M PBS Buffer (pH 7.2) prior to IHC staining.