

SERPIND1 Rabbit pAb

Catalog No.: A5848

1 Publications

Basic Information

Observed MW

57-69kDa

Calculated MW

57kDa

Category

Primary antibody

Applications

WB, ELISA

Cross-Reactivity

Human, Mouse

Background

This gene belongs to the serpin gene superfamily. Serpins play roles in many processes including inflammation, blood clotting, and cancer metastasis. Members of this family have highly conserved secondary structures with a reactive center loop that interacts with the protease active site to inhibit protease activity. This gene encodes a plasma serine protease that functions as a thrombin and chymotrypsin inhibitor. The protein is activated by heparin, dermatan sulfate, and glycosaminoglycans. Allelic variations in this gene are associated with heparin cofactor II deficiency.

Recommended Dilutions

WB 1:500 - 1:2000**ELISA** Recommended starting concentration is 1 µg/mL. Please optimize the concentration based on your specific assay requirements.

Immunogen Information

Gene ID

3053

Swiss Prot

P05546

Immunogen

Recombinant protein (or fragment). This information is considered to be commercially sensitive.

Synonyms

HC2; LS2; HCF2; HCII; HLS2; THPH10; D22S673; SERPIND1

Contact

 | 400-999-6126 | cn.market@abclonal.com.cn | www.abclonal.com.cn

Product Information

Source

Rabbit

Isotype

IgG

Purification

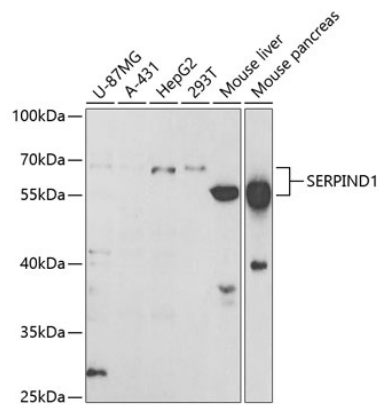
Affinity purification

Storage

Store at -20°C. Avoid freeze / thaw cycles.

Buffer: PBS with 0.02% sodium azide, 50% glycerol, pH 7.3.

Validation Data



Western blot analysis of various lysates using SERPIND1 Rabbit pAb (A5848) at 1:1000 dilution.
Secondary antibody: HRP-conjugated Goat anti-Rabbit IgG (H+L) (AS014) at 1:10000 dilution.
Lysates/proteins: 25µg per lane.
Blocking buffer: 3% nonfat dry milk in TBST.
Detection: ECL Basic Kit (RM00020).
Exposure time: 90s.