

SPIN1 Rabbit pAb

Catalog No.: A5853

Basic Information

Observed MW

32kDa

Calculated MW

30kDa

Category

Primary antibody

Applications

ELISA, WB, IHC-P

Cross-Reactivity

Human, Mouse, Rat

Background

Enables methylated histone binding activity. Involved in positive regulation of Wnt signaling pathway; positive regulation of transcription, DNA-templated; and rRNA transcription. Located in cytosol and nucleus.

Recommended Dilutions

WB 1:500 - 1:2000

IHC-P 1:50 - 1:200

Immunogen Information

Gene ID

10927

Swiss Prot

Q9Y657

Immunogen

Recombinant fusion protein containing a sequence corresponding to amino acids 1-262 of human SPIN1 (NP_006708.2).

Synonyms

SPIN; TDRD24; SPIN1

Contact

☎ | 400-999-6126

✉ | cn.market@abclonal.com.cn

🌐 | www.abclonal.com.cn

Product Information

Source

Rabbit

Isotype

IgG

Purification

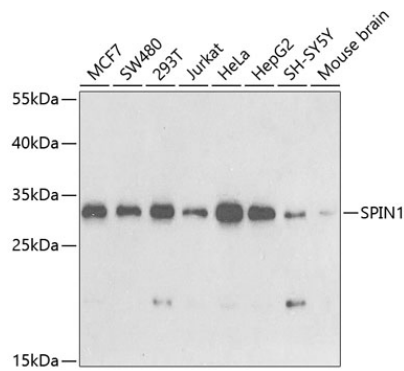
Affinity purification

Storage

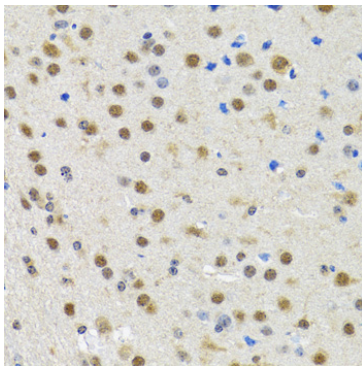
Store at -20°C. Avoid freeze / thaw cycles.

Buffer: PBS with 0.02% sodium azide, 50% glycerol, pH 7.3.

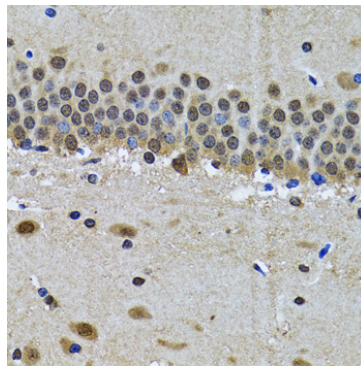
Validation Data



Western blot analysis of various lysates using SPIN1 Rabbit pAb (A5853) at 1:1000 dilution. Secondary antibody: HRP Goat Anti-Rabbit IgG (H+L) (AS014) at 1:10000 dilution. Lysates/proteins: 25µg per lane. Blocking buffer: 3% nonfat dry milk in TBST. Detection: ECL Basic Kit (RM00020). Exposure time: 90s.



Immunohistochemistry analysis of paraffin-embedded Rat brain using SPIN1 Rabbit pAb (A5853) at dilution of 1:100 (40x lens). Perform microwave antigen retrieval with 10 mM PBS buffer pH 7.2 before commencing with IHC staining protocol.



Immunohistochemistry analysis of paraffin-embedded Mouse brain using SPIN1 Rabbit pAb (A5853) at dilution of 1:100 (40x lens). Perform microwave antigen retrieval with 10 mM PBS buffer pH 7.2 before commencing with IHC staining protocol.