

RPS10 Rabbit pAb

Catalog No.: A5880

Basic Information

Observed MW

19kDa

Calculated MW

19kDa

Category

Primary antibody

Applications

ELISA, WB, IHC-P, IF/ICC, IP

Cross-Reactivity

Human, Mouse, Rat

Background

Ribosomes, the organelles that catalyze protein synthesis, consist of a small 40S subunit and a large 60S subunit. Together these subunits are composed of 4 RNA species and approximately 80 structurally distinct proteins. This gene encodes a ribosomal protein that is a component of the 40S subunit. The protein belongs to the S10E family of ribosomal proteins. It is located in the cytoplasm. Variable expression of this gene in colorectal cancers compared to adjacent normal tissues has been observed, although no correlation between the level of expression and the severity of the disease has been found. As is typical for genes encoding ribosomal proteins, there are multiple processed pseudogenes of this gene dispersed through the genome. Alternate splicing results in multiple transcript variants that encode the same protein. Naturally occurring read-through transcription occurs between this locus and the neighboring locus NUDT3 (nudix (nucleoside diphosphate linked moiety X)-type motif 3).

Recommended Dilutions

WB	1:1000 - 1:5000
IHC-P	1:50 - 1:200
IF/ICC	1:100 - 1:500
IP	0.5µg-4µg antibody for 200µg-400µg extracts of whole cells

Contact

☎ | 400-999-6126

✉ | cn.market@abclonal.com.cn

🌐 | www.abclonal.com.cn

Immunogen Information

Gene ID

6204

Swiss Prot

P46783

Immunogen

Recombinant fusion protein containing a sequence corresponding to amino acids 1-165 of human RPS10 (NP_001190174.1).

Synonyms

S10; DBA9; eS10; RPS10

Product Information

Source

Rabbit

Isotype

IgG

Purification

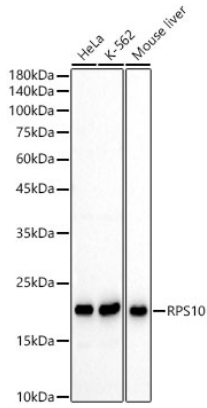
Affinity purification

Storage

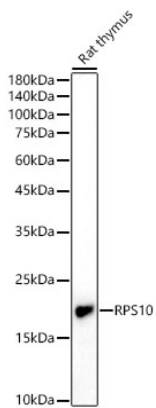
Store at -20°C. Avoid freeze / thaw cycles.

Buffer: PBS with 0.02% sodium azide, 50% glycerol, pH7.3.

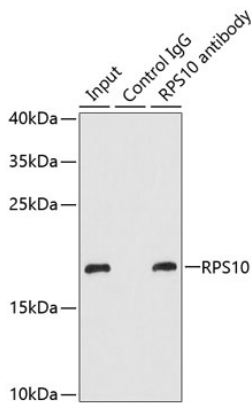
Validation Data



Western blot analysis of various lysates using RPS10 Rabbit pAb (A5880) at 1:2000 dilution.
Secondary antibody:HRP Goat Anti-Rabbit IgG (H+L)(AS014) at 1:10000 dilution.
Lysates / proteins: 25 µg per lane.
Blocking buffer: 3 % nonfat dry milk in TBST.
Detection:ECL Basic Kit (RM00020).
Exposure time: 30s.

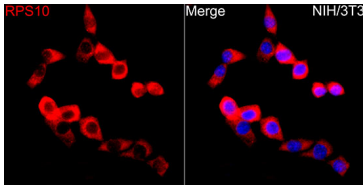


Western blot analysis of lysates from Rat thymus using RPS10 Rabbit pAb (A5880) at 1:2000 dilution.
Secondary antibody:HRP Goat Anti-Rabbit IgG (H+L)(AS014) at 1:10000 dilution.
Lysates/proteins: 25 µg per lane.
Blocking buffer: 3% nonfat dry milk in TBST.
Detection:ECL Basic Kit (RM00020).
Exposure time:180s.

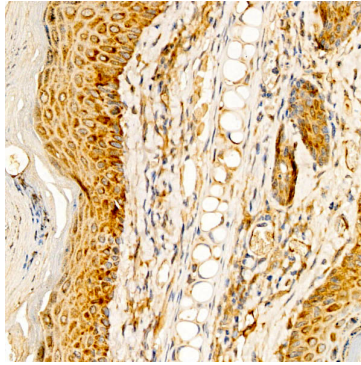


Immunoprecipitation analysis of 200 µg extracts of MCF-7 cells using 1 µg RPS10 antibody (A5880).
Western blot was performed from the immunoprecipitate using RPS10 antibody (A5880) at a dilution of 1:1000.

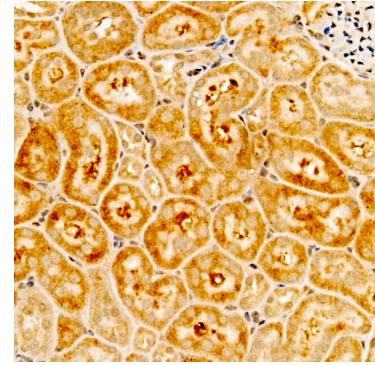
Validation Data



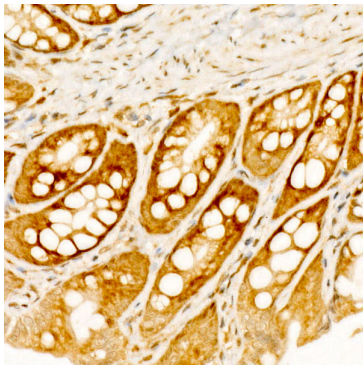
Immunofluorescence analysis of NIH/3T3 cells using RPS10 Rabbit pAb(A5880) at a dilution of 1:500 (40x lens). Secondary antibody: Cy3 Goat Anti-Rabbit IgG (H+L)(AS007) at 1:500 dilution. Blue: DAPI for nuclear staining.



Immunohistochemistry analysis of RPS10 in paraffin-embedded human skin tissue using RPS10 Rabbit pAb (A5880) at a dilution of 1:200 (40x lens). High pressure antigen retrieval was performed with 0.01 M citrate buffer (pH 6.0) prior to IHC staining.



Immunohistochemistry analysis of RPS10 in paraffin-embedded mouse kidney tissue using RPS10 Rabbit pAb (A5880) at a dilution of 1:200 (40x lens). High pressure antigen retrieval was performed with 0.01 M citrate buffer (pH 6.0) prior to IHC staining.



Immunohistochemistry analysis of RPS10 in paraffin-embedded rat colon tissue using RPS10 Rabbit pAb (A5880) at a dilution of 1:200 (40x lens). High pressure antigen retrieval was performed with 0.01 M citrate buffer (pH 6.0) prior to IHC staining.