

MTDH Rabbit pAb

Catalog No.: A5887 **2 Publications**

Basic Information

Observed MW

75kDa/80kDa

Calculated MW

64kDa

Category

Primary antibody

Applications

WB, IHC-P, IF/ICC, ELISA

Cross-Reactivity

Human, Mouse, Rat

Background

Enables NF-kappaB binding activity; double-stranded RNA binding activity; and transcription coactivator activity. Involved in several processes, including lipopolysaccharide-mediated signaling pathway; positive regulation of intracellular signal transduction; and regulation of transcription, DNA-templated. Located in endoplasmic reticulum; nuclear lumen; and perinuclear region of cytoplasm. Implicated in hepatocellular carcinoma.

Recommended Dilutions

WB	1:500 - 1:1000
IHC-P	1:50 - 1:200
IF/ICC	1:50 - 1:200
ELISA	Recommended starting concentration is 1 µg/mL. Please optimize the concentration based on your specific assay requirements.

Immunogen Information

Gene ID

92140

Swiss Prot

Q86UE4

Immunogen

Recombinant protein (or fragment). This information is considered to be commercially sensitive.

Synonyms

3D3; AEG1; AEG-1; LYRIC; LYRIC/3D3; MTDH

Contact

☎	400-999-6126
✉	cn.market@abclonal.com.cn
🌐	www.abclonal.com.cn

Product Information

Source

Rabbit

Isotype

IgG

Purification

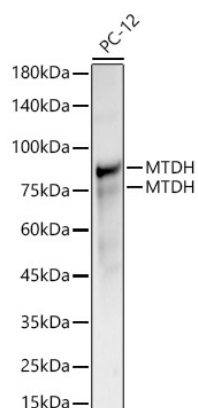
Affinity purification

Storage

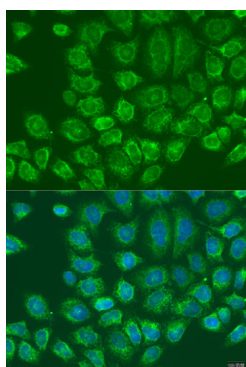
Store at -20°C. Avoid freeze / thaw cycles.

Buffer: PBS containing 50% glycerol, preserved with proclin300 or sodium azide (as specified on the Certificate of Analysis), pH 7.3.

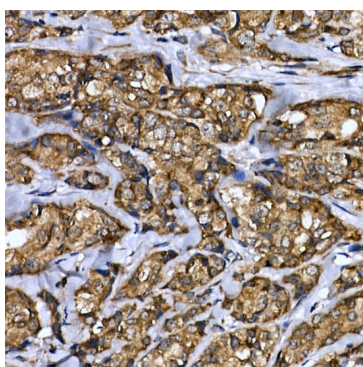
Validation Data



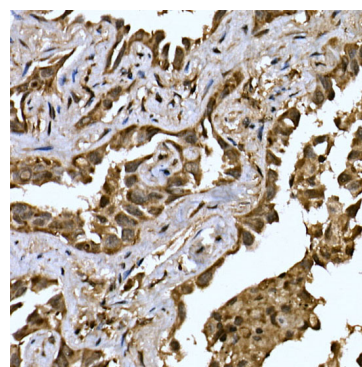
Western blot analysis of lysates from PC-12 cells, using MTDH Rabbit pAb (A5887) at 1:1000 dilution. Secondary antibody: HRP-conjugated Goat anti-Rabbit IgG (H+L) (AS014) at 1:10000 dilution. Lysates/proteins: 25µg per lane. Blocking buffer: 3% nonfat dry milk in TBST. Detection: ECL Basic Kit (RM00020). Exposure time: 7s.



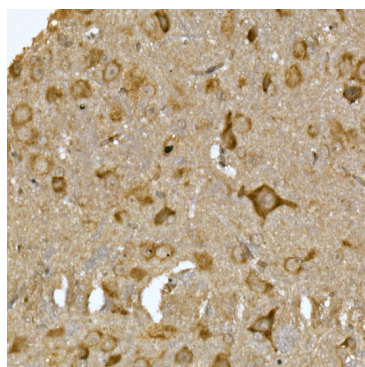
Immunofluorescence analysis of U2OS cells using MTDH Rabbit pAb (A5887) at dilution of 1:100. Secondary antibody: Cy3-conjugated Goat anti-Rabbit IgG (H+L) (AS007) at 1:500 dilution. Blue: DAPI for nuclear staining.



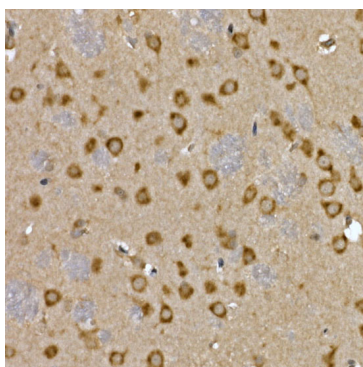
Immunohistochemistry analysis of paraffin-embedded Human breast cancer using MTDH Rabbit pAb (A5887) at dilution of 1:200 (40x lens). High pressure antigen retrieval performed with 0.01M Citrate buffer (pH 6.0) prior to IHC staining.



Immunohistochemistry analysis of paraffin-embedded Human lung cancer using MTDH Rabbit pAb (A5887) at dilution of 1:200 (40x lens). High pressure antigen retrieval performed with 0.01M Citrate buffer (pH 6.0) prior to IHC staining.



Immunohistochemistry analysis of paraffin-embedded Mouse spinal cord using MTDH Rabbit pAb (A5887) at dilution of 1:200 (40x lens). High pressure antigen retrieval performed with 0.01M Citrate buffer (pH 6.0) prior to IHC staining.



Immunohistochemistry analysis of paraffin-embedded Rat brain using MTDH Rabbit pAb (A5887) at dilution of 1:200 (40x lens). High pressure antigen retrieval performed with 0.01M Citrate buffer (pH 6.0) prior to IHC staining.