

# GLRX3 Rabbit pAb

Catalog No.: A5892

## Basic Information

### Observed MW

37kDa

### Calculated MW

37kDa

### Category

Primary antibody

### Applications

ELISA, WB, IP

### Cross-Reactivity

Human

## Background

This gene encodes a member of the glutaredoxin family. Glutaredoxins are oxidoreductase enzymes that reduce a variety of substrates using glutathione as a cofactor. The encoded protein binds to and modulates the function of protein kinase C theta. The encoded protein may also inhibit apoptosis and play a role in cellular growth, and the expression of this gene may be a marker for cancer. Pseudogenes of this gene are located on the short arm of chromosomes 6 and 9. Alternatively spliced transcript variants have been observed for this gene.

## Recommended Dilutions

**WB** 1:500 - 1:2000

**IP** 0.5µg-4µg antibody for  
200µg-400µg extracts of  
whole cells

## Immunogen Information

### Gene ID

10539

### Swiss Prot

O76003

### Immunogen

Recombinant fusion protein containing a sequence corresponding to amino acids 1-335 of human GLRX3 (NP\_001186797.1).

### Synonyms

GRX3; GRX4; GLRX4; PICOT; TXNL2; TXNL3; GLRX3

## Contact

☎ | 400-999-6126

✉ | [cn.market@abclonal.com.cn](mailto:cn.market@abclonal.com.cn)

🌐 | [www.abclonal.com.cn](http://www.abclonal.com.cn)

## Product Information

### Source

Rabbit

### Isotype

IgG

### Purification

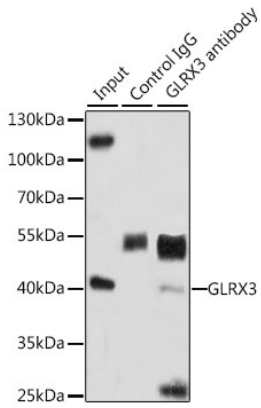
Affinity purification

### Storage

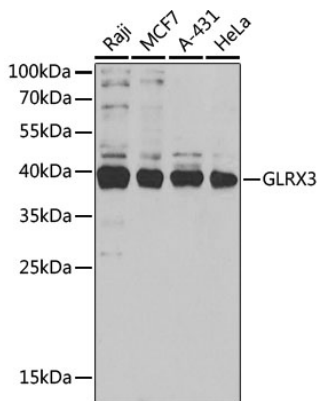
Store at -20°C. Avoid freeze / thaw cycles.

Buffer: PBS with 0.02% sodium azide, 50% glycerol, pH7.3.

## Validation Data



Immunoprecipitation analysis of 200 µg extracts of HeLa cells, using 3 µg GLRX3 antibody (A5892). Western blot was performed from the immunoprecipitate using GLRX3 antibody (A5892) at a dilution of 1:1000.



Western blot analysis of various lysates using GLRX3 Rabbit pAb (A5892) at 1:1000 dilution. Secondary antibody: HRP Goat Anti-Rabbit IgG (H+L) (AS014) at 1:10000 dilution. Lysates/proteins: 25µg per lane. Blocking buffer: 3% nonfat dry milk in TBST. Detection: ECL Basic Kit (RM00020). Exposure time: 15s.