

ELAVL2 Rabbit pAb

Catalog No.: A5918

Basic Information

Observed MW

44kDa

Calculated MW

40kDa

Category

Primary antibody

Applications

ELISA, WB, IHC-P

Cross-Reactivity

Human, Mouse, Rat

Background

In humans, the ELAV like RNA binding protein gene family has four members (ELAVL1-4). ELAVL RNA binding proteins recognize AU-rich elements in the 3' UTRs of gene transcripts and thereby regulate gene expression post-transcriptionally. The protein encoded by this gene binds to several 3' UTRs, including its own and also that of FOS, ID, and POU5F1. This gene encodes ELAVL2 and, like ELAVL3 and ELAVL4, is expressed specifically in neurons and primarily localizes to the cytoplasm. This protein also forms a cytosolic complex with the normally nuclear-localized ELAVL1 protein. Alternative splicing of this gene results in multiple transcript variants encoding distinct protein isoforms.

Recommended Dilutions

WB	1:1000 - 1:2000
IHC-P	1:50 - 1:200

Immunogen Information

Gene ID

1993

Swiss Prot

Q12926

Immunogen

A synthetic peptide corresponding to a sequence within amino acids 1-100 of human ELAVL2 (NP_004423.2).

Synonyms

HUB; HELN1; HEL-N1; ELAVL2

Contact

☎ | 400-999-6126

✉ | cn.market@abclonal.com.cn

🌐 | www.abclonal.com.cn

Product Information

Source

Rabbit

Isotype

IgG

Purification

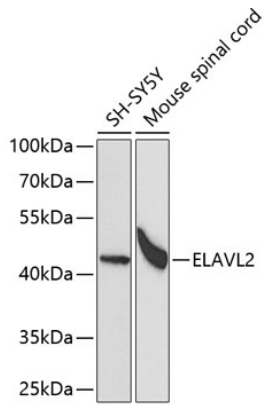
Affinity purification

Storage

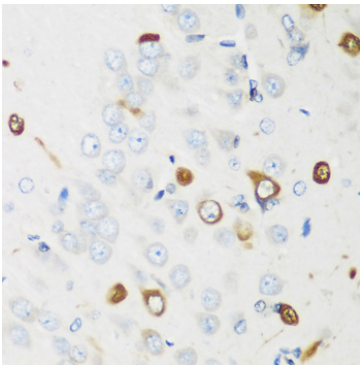
Store at -20°C. Avoid freeze / thaw cycles.

Buffer: PBS with 0.02% sodium azide, 50% glycerol, pH 7.3.

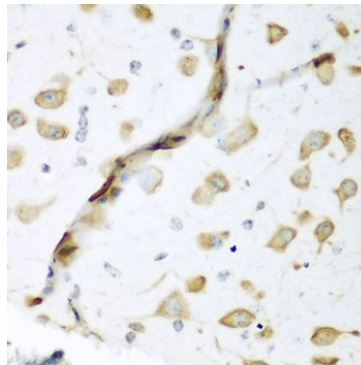
Validation Data



Western blot analysis of various lysates using ELAVL2 Rabbit pAb (A5918) at 1:1000 dilution.
Secondary antibody: HRP Goat Anti-Rabbit IgG (H+L) (AS014) at 1:10000 dilution.
Lysates/proteins: 25µg per lane.
Blocking buffer: 3% nonfat dry milk in TBST.
Detection: ECL Basic Kit (RM00020).
Exposure time: 90s.



Immunohistochemistry analysis of paraffin-embedded Rat brain using ELAVL2 Rabbit pAb (A5918) at dilution of 1:200 (40x lens). Perform microwave antigen retrieval with 10 mM PBS buffer pH 7.2 before commencing with IHC staining protocol.



Immunohistochemistry analysis of paraffin-embedded Mouse brain using ELAVL2 Rabbit pAb (A5918) at dilution of 1:200 (40x lens). Perform microwave antigen retrieval with 10 mM PBS buffer pH 7.2 before commencing with IHC staining protocol.