

# ETF1 Rabbit pAb

Catalog No.: A5920

## Basic Information

### Observed MW

55kDa

### Calculated MW

49kDa

### Category

Primary antibody

### Applications

ELISA, WB, IF/ICC

### Cross-Reactivity

Human, Mouse, Rat

## Background

This gene encodes a class-1 polypeptide chain release factor. The encoded protein plays an essential role in directing termination of mRNA translation from the termination codons UAA, UAG and UGA. This protein is a component of the SURF complex which promotes degradation of prematurely terminated mRNAs via the mechanism of nonsense-mediated mRNA decay (NMD). Alternate splicing results in multiple transcript variants. Pseudogenes of this gene are found on chromosomes 6, 7, and X.

## Recommended Dilutions

WB 1:200 - 1:2000

IF/ICC 1:50 - 1:200

## Immunogen Information

### Gene ID

2107

### Swiss Prot

P62495

### Immunogen

Recombinant fusion protein containing a sequence corresponding to amino acids 278-437 of human ETF1 (NP\_004721.1).

### Synonyms

ERF; RF1; ERF1; TB3-1; D5S1995; SUP45L1; ETF1

## Contact

☎ | 400-999-6126

✉ | [cn.market@abclonal.com.cn](mailto:cn.market@abclonal.com.cn)

🌐 | [www.abclonal.com.cn](http://www.abclonal.com.cn)

## Product Information

### Source

Rabbit

### Isotype

IgG

### Purification

Affinity purification

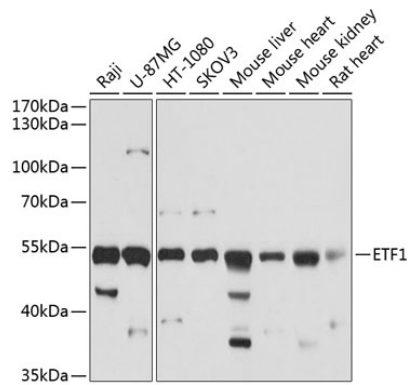
### Storage

Store at -20°C. Avoid freeze / thaw cycles.

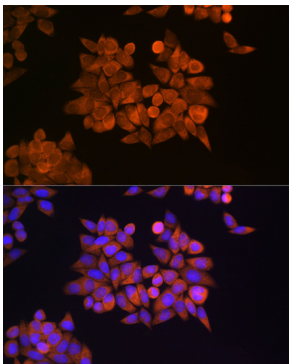
Buffer: PBS with 0.02% sodium azide, 50% glycerol, pH 7.3.

## Validation Data

---



Western blot analysis of extracts of various cell lines, using ETF1 antibody (A5920) at 1:1000 dilution.  
Secondary antibody: HRP Goat Anti-Rabbit IgG (H+L) (AS014) at 1:10000 dilution.  
Lysates/proteins: 25µg per lane.  
Blocking buffer: 3% nonfat dry milk in TBST.  
Detection: ECL Basic Kit (RM00020).  
Exposure time: 3s.



Immunofluorescence analysis of HeLa cells using ETF1 Rabbit pAb (A5920) at dilution of 1:100 (40x lens). Blue: DAPI for nuclear staining.