

PIK3R4/VPS15 Rabbit mAb

Catalog No.: A5922 **Recombinant**

Basic Information

Observed MW

153kDa

Calculated MW

153kDa

Category

Primary antibody

Applications

WB,IF/ICC,ELISA

Cross-Reactivity

Human, Mouse

CloneNo number

ARC2090

Background

Predicted to enable protein serine/threonine kinase activity. Involved in positive regulation of phosphatidylinositol 3-kinase activity; receptor catabolic process; and regulation of cytokinesis. Located in late endosome and microtubule cytoskeleton.

Recommended Dilutions

WB 1:500 - 1:2000

IF/ICC 1:100 - 1:400

ELISA Recommended starting concentration is 1 µg/mL. Please optimize the concentration based on your specific assay requirements.

Immunogen Information

Gene ID

30849

Swiss Prot

Q99570

Immunogen

Synthetic peptide. This information is considered to be commercially sensitive.

Synonyms

p150; VPS15; PIK3R4/VPS15

Contact

☎ | 400-999-6126

✉ | cn.market@abclonal.com.cn

🌐 | www.abclonal.com.cn

Product Information

Source

Rabbit

Isotype

IgG

Purification

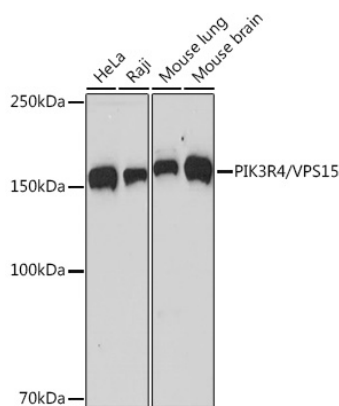
Affinity purification

Storage

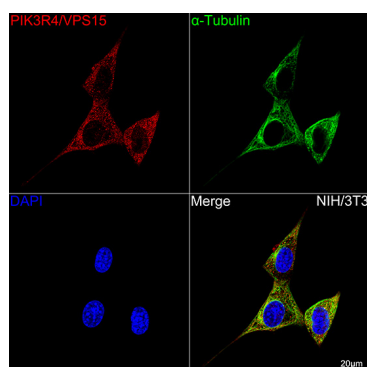
Store at -20°C. Avoid freeze / thaw cycles.

Buffer: PBS with 0.02% sodium azide,0.05% BSA,50% glycerol,pH7.3.

Validation Data



Western blot analysis of various lysates using PIK3R4/VPS15 Rabbit mAb (A5922) at 1:1000 dilution. Secondary antibody: HRP-conjugated Goat anti-Rabbit IgG (H+L) (AS014) at 1:10000 dilution. Lysates/proteins: 25µg per lane. Blocking buffer: 3% nonfat dry milk in TBST. Detection: ECL Basic Kit (RM00020). Exposure time: 60s.



Confocal imaging of NIH/3T3 cells using PIK3R4/VPS15 Rabbit mAb (A5922, dilution 1:100) followed by a further incubation with Cy3 Goat Anti-Rabbit IgG (H+L) (AS007, dilution 1:500) (Red). The cells were counterstained with α-Tubulin Mouse mAb (AC012, dilution 1:400) followed by incubation with ABflo® 488-conjugated Goat Anti-Mouse IgG (H+L) Ab (AS076, dilution 1:500) (Green). DAPI was used for nuclear staining (Blue). Objective: 100x.