

WAPL Rabbit mAb

Catalog No.: A5923 **Recombinant**

Basic Information

Observed MW

150kDa

Calculated MW

133kDa

Category

Primary antibody

Applications

ELISA,WB,IF/ICC

Cross-Reactivity

Human, Mouse

CloneNo number

ARC2088

Background

Involved in several processes, including negative regulation of DNA replication; negative regulation of chromatin binding activity; and regulation of sister chromatid cohesion. Located in several cellular components, including Golgi apparatus; intercellular bridge; and microtubule cytoskeleton.

Recommended Dilutions

WB 1:500 - 1:1000

IF/ICC 1:50 - 1:200

Immunogen Information

Gene ID

23063

Swiss Prot

Q7Z5K2

Immunogen

A synthetic peptide corresponding to a sequence within amino acids 1-100 of human WAPL (Q7Z5K2).

Synonyms

FOE; WAPAL; KIAA0261; WAPL

Contact

☎ | 400-999-6126

✉ | cn.market@abclonal.com.cn

🌐 | www.abclonal.com.cn

Product Information

Source

Rabbit

Isotype

IgG

Purification

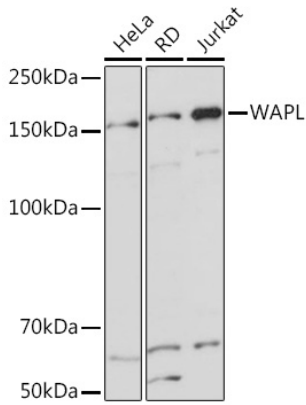
Affinity purification

Storage

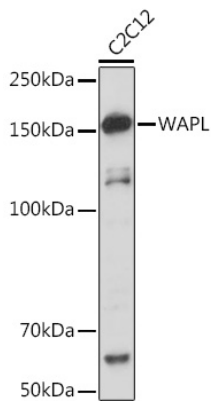
Store at -20°C. Avoid freeze / thaw cycles.

Buffer: PBS with 0.02% sodium azide,0.05% BSA,50% glycerol,pH7.3.

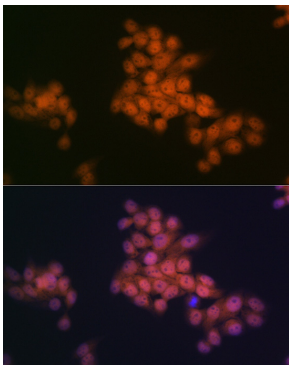
Validation Data



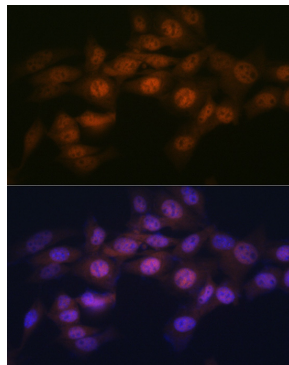
Western blot analysis of extracts of various cell lines, using WAPL Rabbit mAb (A5923) at 1:1000 dilution. Secondary antibody: HRP Goat Anti-Rabbit IgG (H+L) (AS014) at 1:10000 dilution. Lysates/proteins: 25µg per lane. Blocking buffer: 3% nonfat dry milk in TBST. Detection: ECL Basic Kit (RM00020). Exposure time: 1s.



Western blot analysis of extracts of C2C12 cells, using WAPL Rabbit mAb (A5923) at 1:1000 dilution. Secondary antibody: HRP Goat Anti-Rabbit IgG (H+L) (AS014) at 1:10000 dilution. Lysates/proteins: 25µg per lane. Blocking buffer: 3% nonfat dry milk in TBST. Detection: ECL Basic Kit (RM00020). Exposure time: 10s.



Immunofluorescence analysis of HeLa cells using WAPL Rabbit mAb (A5923) at dilution of 1:100 (40x lens). Blue: DAPI for nuclear staining.



Immunofluorescence analysis of NIH-3T3 cells using WAPL Rabbit mAb (A5923) at dilution of 1:100 (40x lens). Blue: DAPI for nuclear staining.