

NHP2L1 Rabbit pAb

Catalog No.: A5926

Basic Information

Observed MW

14kDa

Calculated MW

14kDa

Category

Primary antibody

Applications

ELISA, WB

Cross-Reactivity

Human, Mouse

Background

Originally named because of its sequence similarity to the *Saccharomyces cerevisiae* NHP2 (non-histone protein 2), this protein appears to be a highly conserved nuclear protein that is a component of the [U4/U6.U5] tri-snRNP. It binds to the 5' stem-loop of U4 snRNA. Two transcript variants encoding the same protein have been found for this gene.

Recommended Dilutions

WB 1:500 - 1:2000

Immunogen Information

Gene ID

4809

Swiss Prot

P55769

Immunogen

Recombinant fusion protein containing a sequence corresponding to amino acids 1-128 of human NHP2L1 (NP_004999.1).

Synonyms

FA1; FA-1; NHPX; 15.5K; OTK27; SSFA1; NHP2L1; SPAG12; SNRNP15-5

Contact

☎ | 400-999-6126

✉ | cn.market@abclonal.com.cn

🌐 | www.abclonal.com.cn

Product Information

Source

Rabbit

Isotype

IgG

Purification

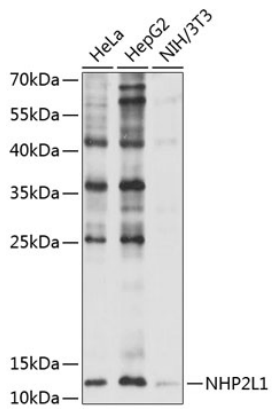
Affinity purification

Storage

Store at -20°C. Avoid freeze / thaw cycles.

Buffer: PBS with 0.02% sodium azide, 50% glycerol, pH 7.3.

Validation Data



Western blot analysis of extracts of various cell lines, using NHP2L1 antibody (A5926) at 1:1000 dilution.
Secondary antibody: HRP Goat Anti-Rabbit IgG (H+L) (AS014) at 1:10000 dilution.
Lysates/proteins: 25µg per lane.
Blocking buffer: 3% nonfat dry milk in TBST.
Detection: ECL Basic Kit (RM00020).
Exposure time: 5s.