

PERP Rabbit mAb

Catalog No.: A5937 **Recombinant**

Basic Information

Observed MW

21kDa

Calculated MW

21kDa

Category

Primary antibody

Applications

ELISA, WB, IHC-P, IF/ICC

Cross-Reactivity

Human, Mouse, Rat

CloneNo number

ARC2094

Background

Involved in activation of cysteine-type endopeptidase activity. Predicted to be located in plasma membrane. Predicted to be active in cell-cell junction. Implicated in erythrokeratoderma variabilis and mutilating palmoplantar keratoderma with periorificial keratotic plaques.

Recommended Dilutions

WB	1:500 - 1:2000
IHC-P	1:50 - 1:200
IF/ICC	1:50 - 1:200

Immunogen Information

Gene ID

64065

Swiss Prot

Q96FX8

Immunogen

A synthetic peptide corresponding to a sequence within amino acids 94-193 of human PERP (Q96FX8).

Synonyms

THW; KCP1; EKVP7; OLMS2; PIGPC1; KRTCAP1; dJ496H19.1; PERP

Contact

	400-999-6126
	cn.market@abclonal.com.cn
	www.abclonal.com.cn

Product Information

Source

Rabbit

Isotype

IgG

Purification

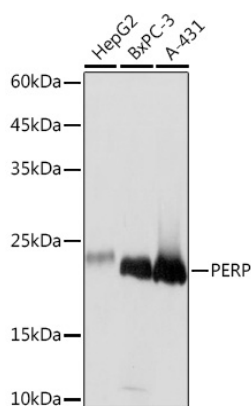
Affinity purification

Storage

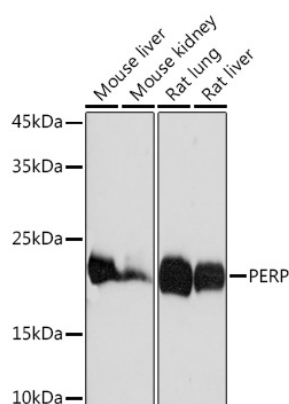
Store at -20°C. Avoid freeze / thaw cycles.

Buffer: PBS with 0.02% sodium azide, 0.05% BSA, 50% glycerol, pH7.3.

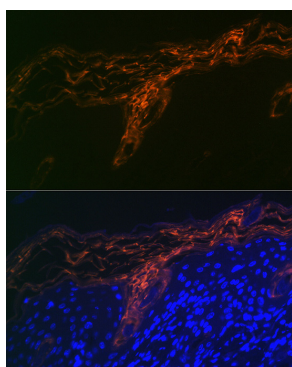
Validation Data



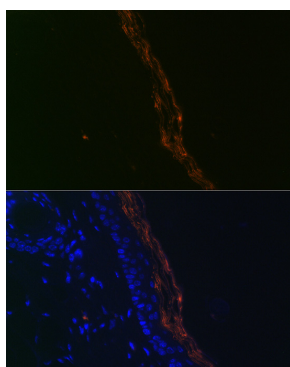
Western blot analysis of extracts of various cell lines, using PERP Rabbit mAb (A5937) at 1:1000 dilution. Secondary antibody: HRP Goat Anti-Rabbit IgG (H+L) (AS014) at 1:10000 dilution. Lysates/proteins: 25µg per lane. Blocking buffer: 3% nonfat dry milk in TBST. Detection: ECL Basic Kit (RM00020). Exposure time: 1s.



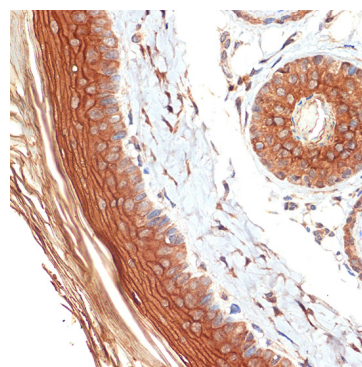
Western blot analysis of extracts of various cell lines, using PERP Rabbit mAb (A5937) at 1:1000 dilution. Secondary antibody: HRP Goat Anti-Rabbit IgG (H+L) (AS014) at 1:10000 dilution. Lysates/proteins: 25µg per lane. Blocking buffer: 3% nonfat dry milk in TBST. Detection: ECL Basic Kit (RM00020). Exposure time: 1s.



Immunofluorescence analysis of human skin cells using PERP Rabbit mAb (A5937) at dilution of 1:100 (40x lens). Blue: DAPI for nuclear staining.

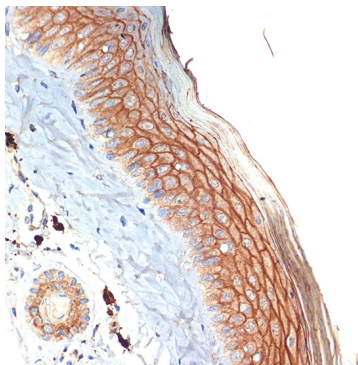


Immunofluorescence analysis of mouse skin cells using PERP Rabbit mAb (A5937) at dilution of 1:100 (40x lens). Blue: DAPI for nuclear staining.



Immunohistochemistry analysis of paraffin-embedded rat skin using PERP Rabbit mAb (A5937) at dilution of 1:100 (40x lens). Perform microwave antigen retrieval with 10 mM Tris/EDTA buffer pH 9.0 before commencing with IHC staining protocol.

Validation Data



Immunohistochemistry analysis of paraffin-embedded mouse skin using PERP Rabbit mAb (A5937) at dilution of 1:100 (40x lens). Perform microwave antigen retrieval with 10 mM Tris/EDTA buffer pH 9.0 before commencing with IHC staining protocol.