

[KO Validated] CSDE1 Rabbit pAb

Catalog No.: A5941 **KO** **Validated** **2 Publications**

Basic Information

Observed MW

89kDa

Calculated MW

89kDa

Category

Primary antibody

Applications

WB,IF/ICC,IP,ELISA

Cross-Reactivity

Human, Mouse

Background

Enables RNA stem-loop binding activity. Involved in IRES-dependent viral translational initiation; nuclear-transcribed mRNA catabolic process, no-go decay; and stress granule assembly. Located in Golgi apparatus; cytosol; and plasma membrane. Part of CRD-mediated mRNA stability complex.

Recommended Dilutions

WB 1:500 - 1:1000

IF/ICC 1:50 - 1:200

IP 0.5µg-4µg antibody for
200µg-400µg extracts of
whole cells

ELISA Recommended starting
concentration is 1 µg/mL.
Please optimize the
concentration based on
your specific assay
requirements.

Immunogen Information

Gene ID

7812

Swiss Prot

O75534

Immunogen

Recombinant protein (or fragment). This information is considered to be commercially sensitive.

Synonyms

UNR; D1S155E; E1

Contact

☎ | 400-999-6126

✉ | cn.market@abclonal.com.cn

🌐 | www.abclonal.com.cn

Product Information

Source

Rabbit

Isotype

IgG

Purification

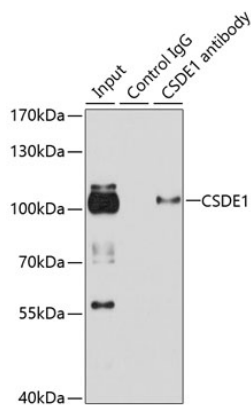
Affinity purification

Storage

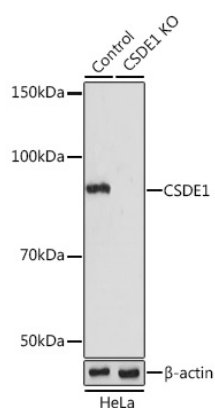
Store at -20°C. Avoid freeze / thaw cycles.

Buffer: PBS with 0.02% sodium azide, 50% glycerol, pH7.3.

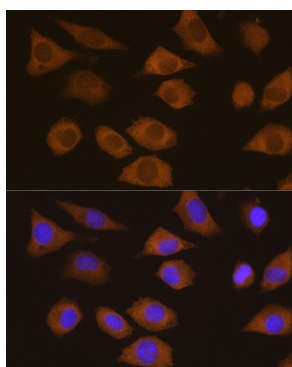
Validation Data



Immunoprecipitation analysis of 100 µg extracts of HeLa cells using 3 µg CSDE1 antibody (A5941). Western blot was performed from the immunoprecipitate using CSDE1 antibody (A5941) at a dilution of 1:1000.



Western blot analysis of lysates from wild type (WT) and CSDE1 knockout (KO) HeLa cells, using [KO Validated] CSDE1 Rabbit pAb (A5941) at 1:1000 dilution. Secondary antibody: HRP-conjugated Goat anti-Rabbit IgG (H+L) (AS014) at 1:10000 dilution. Lysates/proteins: 25µg per lane. Blocking buffer: 3% nonfat dry milk in TBST. Detection: ECL Basic Kit (RM00020). Exposure time: 15s.



Immunofluorescence analysis of L929 cells using CSDE1 Rabbit pAb (A5941) at dilution of 1:100. Secondary antibody: Cy3-conjugated Goat anti-Rabbit IgG (H+L) (AS007) at 1:500 dilution. Blue: DAPI for nuclear staining.