

# POP1 Rabbit pAb

Catalog No.: A5961

## Basic Information

### Observed MW

115kDa

### Calculated MW

115kDa

### Category

Primary antibody

### Applications

ELISA, WB

### Cross-Reactivity

Mouse, Rat

## Background

This gene encodes the protein subunit of two different small nucleolar ribonucleoprotein complexes: the endoribonuclease for mitochondrial RNA processing complex and the ribonuclease P complex. The encoded protein is a ribonuclease that localizes to the nucleus and functions in pre-RNA processing. This protein is also an autoantigen in patients suffering from connective tissue diseases. Alternative splicing results in multiple transcript variants.

## Recommended Dilutions

WB 1:200 - 1:2000

## Immunogen Information

### Gene ID

10940

### Swiss Prot

Q99575

### Immunogen

Recombinant fusion protein containing a sequence corresponding to amino acids 1-210 of human POP1 (NP\_055844.2).

### Synonyms

ANXD2; POP1

## Contact

☎ | 400-999-6126

✉ | [cn.market@abclonal.com.cn](mailto:cn.market@abclonal.com.cn)

🌐 | [www.abclonal.com.cn](http://www.abclonal.com.cn)

## Product Information

### Source

Rabbit

### Isotype

IgG

### Purification

Affinity purification

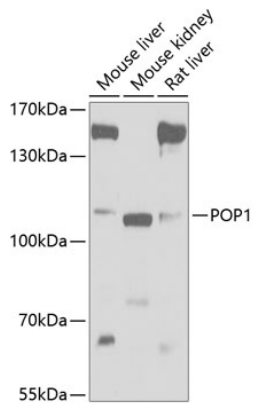
### Storage

Store at -20°C. Avoid freeze / thaw cycles.

Buffer: PBS with 0.02% sodium azide, 50% glycerol, pH7.3.

## Validation Data

---



Western blot analysis of extracts of various cell lines, using POP1 antibody (A5961) at 1:1000 dilution.  
Secondary antibody: HRP Goat Anti-Rabbit IgG (H+L) (AS014) at 1:10000 dilution.  
Lysates/proteins: 25 $\mu$ g per lane.  
Blocking buffer: 3% nonfat dry milk in TBST.  
Detection: ECL Basic Kit (RM00020).  
Exposure time: 5s.