

CPSF6 Rabbit pAb

Catalog No.: A5963

1 Publications

Basic Information

Observed MW

68kDa

Calculated MW

59kDa

Category

Primary antibody

Applications

ELISA, WB, IHC-P, IF/ICC, IP

Cross-Reactivity

Human, Mouse, Rat

Background

The protein encoded by this gene is one subunit of a cleavage factor required for 3' RNA cleavage and polyadenylation processing. The interaction of the protein with the RNA is one of the earliest steps in the assembly of the 3' end processing complex and facilitates the recruitment of other processing factors. The cleavage factor complex is composed of four polypeptides. This gene encodes the 68kD subunit. It has a domain organization reminiscent of spliceosomal proteins.

Recommended Dilutions

WB	1:1000 - 1:3000
IHC-P	1:50 - 1:200
IF/ICC	1:50 - 1:200
IP	0.5µg-4µg antibody for 200µg-400µg extracts of whole cells

Contact

☎ | 400-999-6126

✉ | cn.market@abclonal.com.cn

🌐 | www.abclonal.com.cn

Immunogen Information

Gene ID

11052

Swiss Prot

Q16630

Immunogen

Recombinant fusion protein containing a sequence corresponding to amino acids 1-330 of human CPSF6 (NP_008938.2).

Synonyms

CFIM; CFIM68; CFIM72; HPBR11-4; HPBR11-7; CPSF6

Product Information

Source

Rabbit

Isotype

IgG

Purification

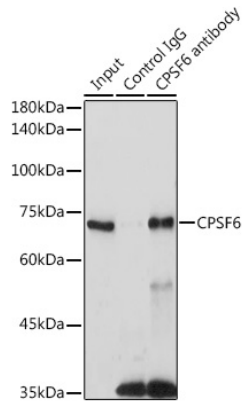
Affinity purification

Storage

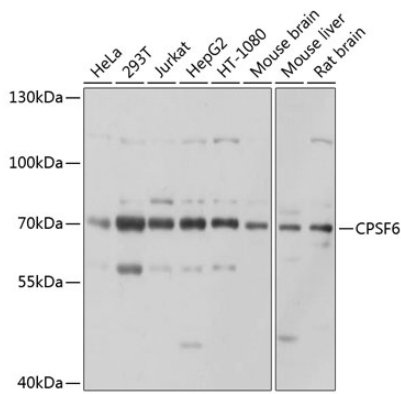
Store at -20°C. Avoid freeze / thaw cycles.

Buffer: PBS with 0.02% sodium azide, 50% glycerol, pH7.3.

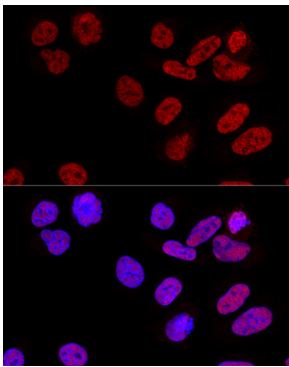
Validation Data



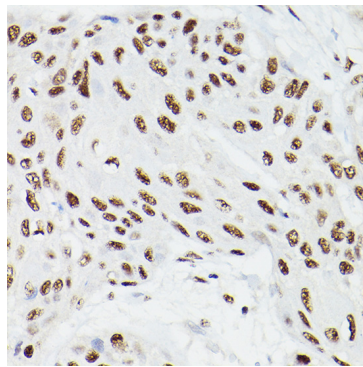
Immunoprecipitation analysis of 300 μ g extracts of 293T cells using 3 μ g CPSF6 antibody (A5963). Western blot was performed from the immunoprecipitate using CPSF6 antibody (A5963) at a dilution of 1:1000.



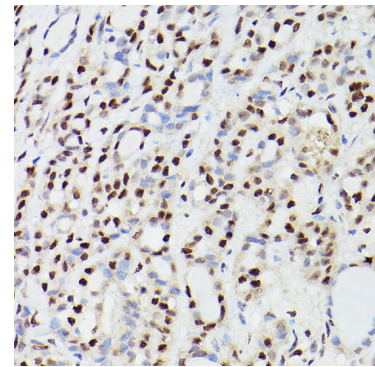
Western blot analysis of various lysates using CPSF6 Rabbit pAb (A5963) at 1:1000 dilution. Secondary antibody: HRP Goat Anti-Rabbit IgG (H+L) (A5014) at 1:10000 dilution. Lysates/proteins: 25 μ g per lane. Blocking buffer: 3% nonfat dry milk in TBST. Detection: ECL Basic Kit (RM00020). Exposure time: 1s.



Confocal immunofluorescence analysis of U2OS cells using CPSF6 Rabbit pAb (A5963) at dilution of 1:100. Blue: DAPI for nuclear staining.

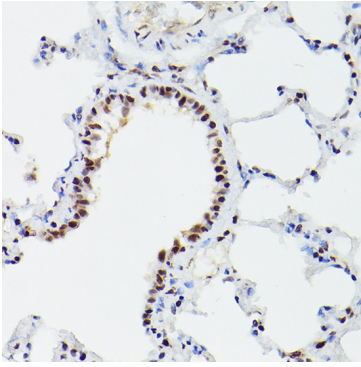


Immunohistochemistry analysis of paraffin-embedded Human esophageal cancer using CPSF6 Rabbit pAb (A5963) at dilution of 1:100 (40x lens). Perform high pressure antigen retrieval with 10 mM citrate buffer pH 6.0 before commencing with IHC staining protocol.

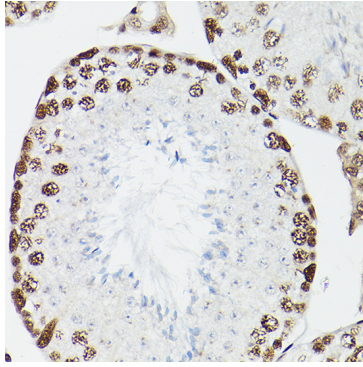


Immunohistochemistry analysis of paraffin-embedded Human thyroid cancer using CPSF6 Rabbit pAb (A5963) at dilution of 1:100 (40x lens). Perform high pressure antigen retrieval with 10 mM citrate buffer pH 6.0 before commencing with IHC staining protocol.

Validation Data



Immunohistochemistry analysis of paraffin-embedded Mouse lung using CPSF6 Rabbit pAb (A5963) at dilution of 1:100 (40x lens). Perform high pressure antigen retrieval with 10 mM citrate buffer pH 6.0 before commencing with IHC staining protocol.



Immunohistochemistry analysis of paraffin-embedded Rat testis using CPSF6 Rabbit pAb (A5963) at dilution of 1:100 (40x lens). Perform high pressure antigen retrieval with 10 mM citrate buffer pH 6.0 before commencing with IHC staining protocol.