

ZCCHC11 Rabbit pAb

Catalog No.: A5972

Basic Information

Observed MW

185kDa

Calculated MW

185kDa

Category

Primary antibody

Applications

ELISA, WB, IF/ICC

Cross-Reactivity

Human, Mouse, Rat

Background

Enables RNA uridylyltransferase activity. Involved in RNA metabolic process; negative regulation of transposition, RNA-mediated; and stem cell population maintenance. Located in cytoplasmic ribonucleoprotein granule; cytosol; and nucleolus. Implicated in liver benign neoplasm. Biomarker of breast cancer.

Recommended Dilutions

WB 1:500 - 1:1000

IF/ICC 1:50 - 1:200

Immunogen Information

Gene ID

23318

Swiss Prot

Q5TAX3

Immunogen

Recombinant fusion protein containing a sequence corresponding to amino acids 1-290 of human ZCCHC11 (NP_001009881.1).

Synonyms

PAPD3; TENT3A; ZCCHC11

Contact

☎ | 400-999-6126

✉ | cn.market@abclonal.com.cn

🌐 | www.abclonal.com.cn

Product Information

Source

Rabbit

Isotype

IgG

Purification

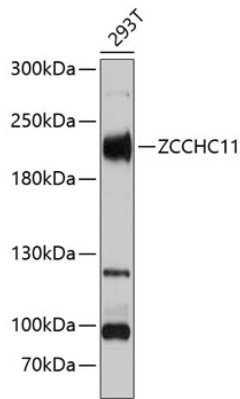
Affinity purification

Storage

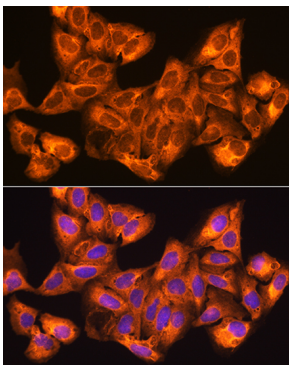
Store at -20°C. Avoid freeze / thaw cycles.

Buffer: PBS with 0.01% thimerosal, 50% glycerol, pH7.3.

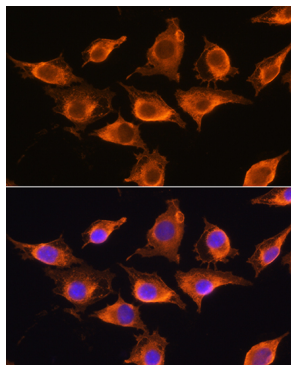
Validation Data



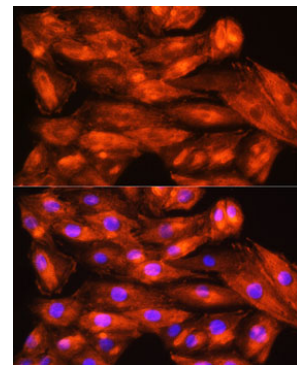
Western blot analysis of lysates from 293T cells, using ZCCHC11 Rabbit pAb (A5972) at 1:3000 dilution.
Secondary antibody: HRP Goat Anti-Rabbit IgG (H+L) (AS014) at 1:10000 dilution.
Lysates/proteins: 25µg per lane.
Blocking buffer: 3% nonfat dry milk in TBST.
Detection: ECL Basic Kit (RM00020).
Exposure time: 20s.



Immunofluorescence analysis of U2OS cells using ZCCHC11 Rabbit pAb (A5972) at dilution of 1:100. Secondary antibody: Cy3 Goat Anti-Rabbit IgG (H+L) (AS007) at 1:500 dilution. Blue: DAPI for nuclear staining.



Immunofluorescence analysis of L929 cells using ZCCHC11 Rabbit pAb (A5972) at dilution of 1:100. Secondary antibody: Cy3 Goat Anti-Rabbit IgG (H+L) (AS007) at 1:500 dilution. Blue: DAPI for nuclear staining.



Immunofluorescence analysis of H9C2 cells using ZCCHC11 Rabbit pAb (A5972) at dilution of 1:100. Secondary antibody: Cy3 Goat Anti-Rabbit IgG (H+L) (AS007) at 1:500 dilution. Blue: DAPI for nuclear staining.