

Syntaxin 4 Rabbit mAb

Catalog No.: A5996

Recombinant

4 Publications

Basic Information

Observed MW

34 kDa

Calculated MW

34 kDa

Category

Primary antibody

Applications

WB, ELISA

Cross-Reactivity

Human, Mouse, Rat

CloneNo number

ARC2113

Background

Enables sphingomyelin phosphodiesterase activator activity. Involved in several processes, including cornified envelope assembly; positive regulation of immune effector process; and positive regulation of protein localization. Located in several cellular components, including basolateral plasma membrane; cytoplasmic vesicle; and lamellipodium. Part of SNARE complex. Is active in glutamatergic synapse and postsynapse.

Recommended Dilutions

WB 1:1000 - 1:10000

ELISA Recommended starting concentration is 1 µg/mL. Please optimize the concentration based on your specific assay requirements.

Immunogen Information

Gene ID

6810

Swiss Prot

Q12846

Immunogen

Synthetic peptide. This information is considered to be commercially sensitive.

Synonyms

STX4A; p35-2; Syntaxin 4

Contact

☎ | 400-999-6126

✉ | cn.market@abclonal.com.cn

🌐 | www.abclonal.com.cn

Product Information

Source

Rabbit

Isotype

IgG

Purification

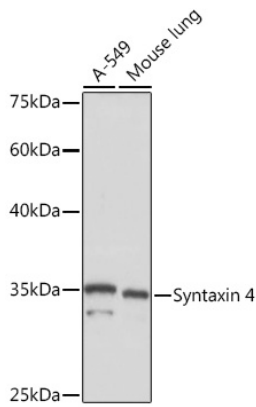
Affinity purification

Storage

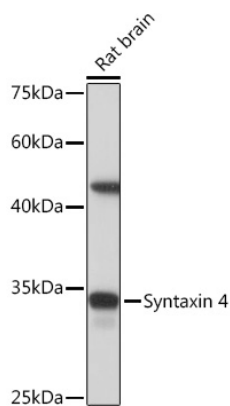
Store at -20°C. Avoid freeze / thaw cycles.

Buffer: PBS containing 50% glycerol and 0.05% BSA, preserved with proclin300 or sodium azide (as specified on the Certificate of Analysis), pH 7.3.

Validation Data



Western blot analysis of various lysates using Syntaxin 4 Rabbit mAb (A5996) at 1:1000 dilution.
Secondary antibody: HRP-conjugated Goat anti-Rabbit IgG (H+L) (AS014) at 1:10000 dilution.
Lysates/proteins: 25 μ g per lane.
Blocking buffer: 3% nonfat dry milk in TBST.
Detection: ECL Basic Kit (RM00020).
Exposure time: 1s.



Western blot analysis of lysates from Rat brain, using Syntaxin 4 Rabbit mAb (A5996) at 1:1000 dilution.
Secondary antibody: HRP-conjugated Goat anti-Rabbit IgG (H+L) (AS014) at 1:10000 dilution.
Lysates/proteins: 25 μ g per lane.
Blocking buffer: 3% nonfat dry milk in TBST.
Detection: ECL Basic Kit (RM00020).
Exposure time: 10s.