

AGO1 Rabbit pAb

Catalog No.: A6022 **1 Publications**

Basic Information

Observed MW

100kDa

Calculated MW

97kDa

Category

Primary antibody

Applications

WB,ELISA

Cross-Reactivity

Human, Mouse, Rat

Background

This gene encodes a member of the argonaute family of proteins, which associate with small RNAs and have important roles in RNA interference (RNAi) and RNA silencing. This protein binds to microRNAs (miRNAs) or small interfering RNAs (siRNAs) and represses translation of mRNAs that are complementary to them. It is also involved in transcriptional gene silencing (TGS) of promoter regions that are complementary to bound short antisenRNA (asRNAs), as well as in the degradation of miRNA-bound mRNA targets. Alternatively spliced transcript variants encoding different isoforms have been found for this gene. A recent study showed this gene to be an authentic stop codon readthrough target, and that its mRNA could give rise to an additional C-terminally extended isoform by use of an alternative in-frame translation termination codon.

Recommended Dilutions

WB 1:500 - 1:1000

ELISA Recommended starting concentration is 1 µg/mL. Please optimize the concentration based on your specific assay requirements.

Immunogen Information

Gene ID

26523

Swiss Prot

Q9UL18

Immunogen

Recombinant fusion protein containing a sequence corresponding to amino acids 1-170 of human AGO1 (NP_036331.1).

Synonyms

Q99; EIF2C; hAgo1; EIF2C1; GERP95; NEDLBAS; AGO1

Contact

 | 400-999-6126

 | cn.market@abclonal.com.cn

 | www.abclonal.com.cn

Product Information

Source

Rabbit

Isotype

IgG

Purification

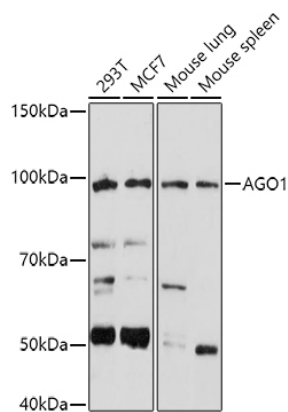
Affinity purification

Storage

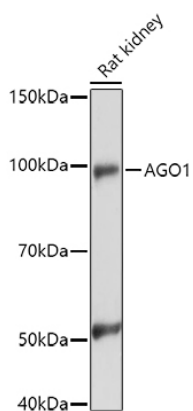
Store at -20°C. Avoid freeze / thaw cycles.

Buffer: PBS with 0.09% Sodium azide,50% glycerol,pH7.3.

Validation Data



Western blot analysis of various lysates using (A6022) at 1:1000 dilution.
Secondary antibody: HRP-conjugated Goat anti-Rabbit IgG (H+L) (AS014) at 1:10000 dilution.
Lysates/proteins: 25µg per lane.
Blocking buffer: 3% nonfat dry milk in TBST.
Detection: ECL Basic Kit (RM00020).
Exposure time: 180s.



Western blot analysis of lysates from Rat kidney, using (A6022) at 1:1000 dilution.
Secondary antibody: HRP-conjugated Goat anti-Rabbit IgG (H+L) (AS014) at 1:10000 dilution.
Lysates/proteins: 25µg per lane.
Blocking buffer: 3% nonfat dry milk in TBST.
Detection: ECL Enhanced Kit (RM00021).
Exposure time: 180s.