

# SRRM1 Rabbit pAb

Catalog No.: A6066

## Basic Information

### Observed MW

102kDa

### Calculated MW

102kDa

### Category

Primary antibody

### Applications

ELISA, WB, IHC-P

### Cross-Reactivity

Human, Mouse

## Background

Enables RNA binding activity. Predicted to be involved in mRNA splicing, via spliceosome. Located in nuclear speck. Part of catalytic step 2 spliceosome. Biomarker of gestational diabetes.

## Recommended Dilutions

WB	1:500 - 1:1000
IHC-P	1:100 - 1:500

## Immunogen Information

### Gene ID

10250

### Swiss Prot

Q8IYB3

### Immunogen

Recombinant fusion protein containing a sequence corresponding to amino acids 1-160 of human SRRM1 (NP\_005830.2).

### Synonyms

160-KD; POP101; SRM160; SRRM1

## Contact

 | 400-999-6126

 | [cn.market@abclonal.com.cn](mailto:cn.market@abclonal.com.cn)

 | [www.abclonal.com.cn](http://www.abclonal.com.cn)

## Product Information

### Source

Rabbit

### Isotype

IgG

### Purification

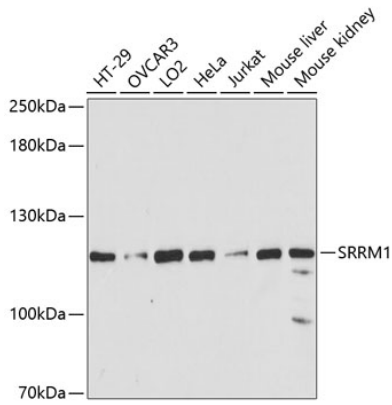
Affinity purification

### Storage

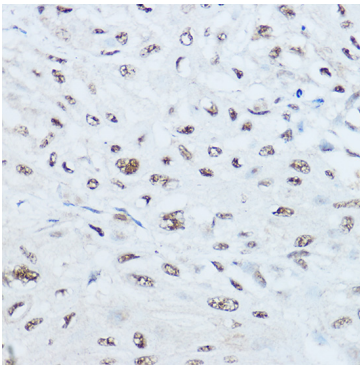
Store at -20°C. Avoid freeze / thaw cycles.

Buffer: PBS with 0.01% thimerosal, 50% glycerol, pH7.3.

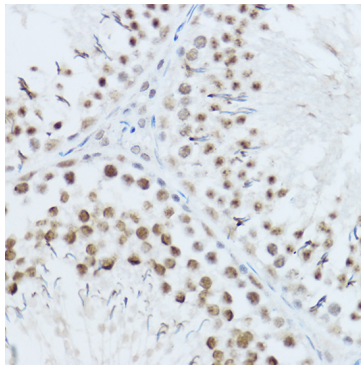
## Validation Data



Western blot analysis of various lysates using SRRM1 Rabbit pAb (A6066) at 1:3000 dilution.  
Secondary antibody: HRP Goat Anti-Rabbit IgG (H+L) (AS014) at 1:10000 dilution.  
Lysates/proteins: 25 $\mu$ g per lane.  
Blocking buffer: 3% nonfat dry milk in TBST.  
Detection: ECL Basic Kit (RM00020).  
Exposure time: 90s.



Immunohistochemistry analysis of paraffin-embedded Human esophageal cancer using SRRM1 Rabbit pAb (A6066) at dilution of 1:400 (40x lens). Perform high pressure antigen retrieval with 10 mM citrate buffer pH 6.0 before commencing with IHC staining protocol.



Immunohistochemistry analysis of paraffin-embedded Mouse testis using SRRM1 Rabbit pAb (A6066) at dilution of 1:400 (40x lens). Perform high pressure antigen retrieval with 10 mM citrate buffer pH 6.0 before commencing with IHC staining protocol.